

Construction Union Agreements:  
Union Organizing in Historical-Comparative Perspective

Matthew A. Carson

Department of Sociology  
University of California, Los Angeles

June 8, 2024

*This page intentionally left blank*

---

**Construction Union Agreements:****Union Organizing in Historical-Comparative Perspective**

US Building Trade unions organize their workers differently. Most labor unions compel employers to negotiate, but the Building Trades engage in voluntary negotiations, relying on workers' skill levels rather than strike leverage. This approach correlates with their frequent political deviations from the broader US labor movement, particularly in opposing progressive environmental policies, aligning more closely with the petrochemical industry on environmental issues, and not supporting single-payer healthcare. One view is that unions pursue their members' interests narrowly, sacrificing broader working-class interests if they feel it is necessary to secure work for their members, and some suggest that the conservative stance of the Building Trades stems from their craft union tradition, in which workers are organized by craft and skill instead of by industry. However, using historical-comparative methods, I show that these arguments do not hold. Petrochemical unions have supported progressive policies, and other craft-based unions have endorsed single-payer healthcare. However, unlike the Building Trades, those unions have never used voluntary agreements. Consequently, they have experienced more conflicts with employers. These findings challenge traditional views and suggest that the Building Trades' conservative negotiation strategies significantly shape their political and policy positions, reinforcing an employer-union dynamic that limits challenging management.

## Contents

<b>PREFACE</b> . . . . .	iv
<b>INTRODUCTION</b> . . . . .	1
<b>LITERATURE REVIEW</b> . . . . .	4
Race and Gender . . . . .	5
The Rank and File . . . . .	8
<b>METHODS</b> . . . . .	9
Historical-Comparative . . . . .	9
Interviews . . . . .	10
<b>TYPES OF UNIONISMS</b> . . . . .	11
Craft and Industrial Unionism . . . . .	12
<b>TYPES OF CONTRACTS AND BARGAINING</b> . . . . .	14
Industrial Bargaining . . . . .	14
Building Trades Bargaining . . . . .	15
<b>AN OUTLIER IN THE LABOR MOVEMENT</b> . . . . .	21
Dakota Access Pipeline and Standing Rock . . . . .	22
<b>UNION MEMBERS AS SHAREHOLDERS</b> . . . . .	26
<b>COMPARING THE BUILDING TRADES WITH OTHER UNIONS</b> . . . . .	29
The United Association of Plumbers and Pipe Fitters (UA) Local 189 . . . . .	29
The Oil Chemical and Atomic Workers & United Steelworkers . . . . .	37
The International Association of Machinists (IAM) . . . . .	48
<b>COMPARISONS BETWEEN BUILDING TRADES UNIONS</b> . . . . .	53
Millwrights . . . . .	54
Electricians (IBEW) . . . . .	55
Cement Masons and Plasterers (OPCIMA) . . . . .	59
<b>CONCLUSION</b> . . . . .	61
<b>REFERENCES</b> . . . . .	67
<b>ACRONYMS</b> . . . . .	73

## List of Figures

1	Forming a Union . . . . .	15
2	Union Organizing Paths . . . . .	17
3	Union Leverage and Power . . . . .	20
4	Union Hiring Hall . . . . .	21
5	Anti-Hartley-Taft Rally . . . . .	39
6	Oil Chemical and Atomic Workers Mergers . . . . .	46

## List of Tables

1	Labor Actions . . . . .	28
2	MSSD: IAM and UA . . . . .	65
3	MSSD: OCAW/USW and UA . . . . .	65
4	Differences in Organizing and Contracts . . . . .	66

## PREFACE

My interest in this topic began sometime in the late aughts or early 2010s. This was around the time that there was much talk about the Employee Free Choice Act (EFCA), which, like the Protecting the Right to Organize Act (PRO Act) legislation of 2021, would allow unions to use cards that workers sign to indicate that they want a union in their workplace (often condensed into the term “union representation”). There was (and still is) a tremendous amount of effort that most employers will expend to keep their workplaces from unionizing. At the time, Walmart and other grocery stores were major targets for unionization by the United Food and Commercial Workers (UFCW), as was the service sector in general. Amid fierce opposition from employers, organizing campaigns were largely unsuccessful.

Many viewed EFCA as a means to “level the playing field.” Under current labor law, employers can demand a secret ballot election whenever a union asserts it has majority support from workers, even if most workers have signed union authorization cards. While the employer *could* acknowledge the union’s majority support and commence bargaining upon receiving evidence (e.g., cards signed by the majority of workers), this seldom occurs. Insisting on an election gives the employer time to conduct an anti-union campaign, typically with the help of professional union-busting firms. The EFCA would have stipulated that having the majority of workers sign a card expressing their desire for a union would suffice, preventing the employer from demanding that an election be held once majority support is demonstrated through a card check.

At the time, I was a newly admitted plumbing apprentice. The story of union orga-

nizers facing fierce anti-union opposition did not square with my experience in the United Association of Plumbers and Pipefitters (UA). In the Plumbers and Pipefitters Union, officials and members alike were more apt to describe the union-employer relationship as mutually beneficial, not conflictual. “They need us, and we need them” was a common refrain. While in a mundane sense, it is true enough that employers need workers to build their projects and workers need employment so that they can eat, that certainly is not limited to construction. Yet, construction unions discussed employer-union relations in a strikingly different way compared to the rest of organized labor. Moreover, construction unions were generally silent on the issue of organizing conditions that were tilted in favor of management. But why?

That is when I discovered that construction unions have an entirely different contract type that does not require them to organize like other unions do. Instead of organizing the workplace as the rest of the labor movement does, construction unions can *voluntarily* enter agreements with employers, meaning that rather than fiercely opposing unionization as most employers do, construction employers *voluntarily* went to the union to hire a unionized workforce. But why would they do that while nearly every non-construction employer was fiercely opposed to unions? I was puzzled. This led me to begin thinking about the power dynamics in construction unions vis-à-vis the rest of organized labor. This project is the product of a number of years of thinking about these dynamics.

I have had the good fortune of being advised by Dr. Zsuzsa Berend and Zep Kalb. What started vaguely as a project studying power dynamics and class collaboration in construction unions, where I was really only thinking of fleshing out the internal logic of class collaboration in US construction unions, evolved into a historical-comparative project. I

deeply appreciate their patience with me as I evolved in my thinking on how to best approach the question. Moreover, because the topic is familiar to me, both through personal experience and thinking about it for a number of years, it was easy to forget that certain ideas and concepts, especially those particular to this odd business of US construction unionism, were not immediately clear to others. So, their feedback throughout the project helped tremendously.



## 1. INTRODUCTION

Do the ways unions organize affect their political stances? US construction unions have a distinct approach to organizing their workers vis-à-vis other labor unions. While most labor unions typically compel employers to negotiate through secret ballot elections or work stoppages, the Building Trades take a different route by engaging in voluntary negotiations.<sup>1</sup> Their strategy hinges more on the skill levels of their workers than on the leverage of strikes or official National Labor Relations Board (NLRB) elections, which use the state to compel the employer to negotiate. At the same time, the Building Trades are often outliers in the US labor movement. They frequently oppose progressive environmental policies and thus align more closely with their employers in the petrochemical industry than with other labor or environmental organizations on environmental issues. Additionally, they are not supportive of single-payer healthcare or other social wage policies.<sup>2</sup> Why have the Building Trades taken these positions?

One potential explanation is that unions with many workers in the petrochemical industry will align with the employer on environmental policy if they believe that environmental policies might be “job killers.” That is, the Building Trades’ opposition to an environmental policy meant to attenuate global warming might simply be a function of the union’s interest in keeping their members working. The building trades have many members working on projects in the petrochemical industry, and from this perspective, this is what one would expect from workers and their unions in that industry. After all, why would they

---

<sup>1</sup>See Section 5 for a discussion of the history of secret ballot elections and how the Building Trades negotiate.

<sup>2</sup>To be sure, not all non-Building Trades unions endorse or support single-payer healthcare, but *no* Building Trades unions do at the national level.

support something that might cause unemployment?

Still, others argue that the conservative stance of the Building Trades originates from their tradition of craft unionism, where workers are organized based on craft and skill rather than industry (Rogin 1974; Perlman 1922; Isserman 1976; Philip S. Foner 1996). Craft unions were some of the earliest labor organizations in the US. Their focus on organizing narrowly based on craft distinctions (e.g., plumber) rather than by industry (e.g., construction worker) often corresponded with nativist and racist policies and more conservative positions (e.g., anti-communism and red-baiting), while industrial unions more often opposed racism and were more militant (Philip S. Foner 1994). In short, craft unions have tended to look out for “their own” more than workers more broadly.<sup>3</sup> The Building Trades unions continue to operate as craft unions today.<sup>4</sup> From this perspective, the Building Trades’ conservatism stems from their narrow, craft-based unionism.

However, these views offer an incomplete picture. For instance, some unions with many members working in the petrochemical industry, such as the United Steelworkers (USW), have backed progressive policies, including environmental policies, and other craft-based unions, such as the International Association of Machinists and Aerospace Workers (IAM), have endorsed single-payer healthcare despite organizing along craft lines instead of industry. The key distinction between these unions and their disparate political stances lies in the Building Trades’ use of voluntary agreements, which minimizes conflicts with employers and constrains their ability to challenge management.

---

<sup>3</sup>There are dissenting views concerning how politically conservative the AFL craft unions were. See Cobble (2013) for a dissenting scholarly article, and Parker (2008) for a union activist’s perspective on the nature of craft and industrial unionism.

<sup>4</sup>One can find a union for almost every construction craft—electricians, plumbers, bricklayers, and so on—but good luck finding a union called the “Construction Workers Union.”

## *Overview*

After reviewing the literature (Section 2) and introducing the methods (Section 3), Section 4: “Types of Unionisms” introduces the older craft union logic that the first major US labor federation was guided by and that many unions still adhere to today and contrasts it with the industrial unionism that emerged in response to growing factory production and the perceived inadequacies of craft unionism. Section 5: “Types of Contracts and Bargaining” contrasts the two types of union bargaining and contracts, and Section 6: “An Outlier in the Labor Movement” situates the building trades as an outlier in the broader context of the US labor movement by discussing the Dakota Access Pipeline (DAPL). In Section 7: “Union Members as Shareholders”, Sean McGarvey reveals in an interview that the North America’s Building Trades Unions (NABTU) union philosophy conceives of union members as “shareholders,” whose interests are best served by helping their employer be successful and never striking. Section 8: “Comparing the building trades with other unions” introduces the inter-union<sup>5</sup> comparative cases and their historical backgrounds.

In addition to inter-union comparisons, I also conducted interviews with building trades organizers for intra-building trades comparisons. A minority of building trades unions organized workers using the non-construction method. I suspected that these unions might have more progressive politics because they decided to use a more conflictual or coercive organizing approach. I analyze these interviews in Section 9: “Comparisons between building trades unions”.

---

<sup>5</sup>Between building trades and non-building trades unions

## 2. LITERATURE REVIEW

Nearly every project completed since the 1980s that studied construction unions begins with an acknowledgment that construction unions have been under-researched. Alas, not much has changed in the past forty years. From historians and economists, national-level histories are sparse and dated (Segal 1970; Christie 1956). These provide valuable data on the early origins of the unions but, of course, do not tell much about the present state of affairs. Like the national-level analyses, local and regional-level histories have been sparse, and many were completed in the 1990s or earlier (Schneirov 1993; Kazin 1989). These works have also tended to be more idiographic, so while they offer extremely valuable insight, they have generally not been in conversation with one another in an attempt to build a more general theory of construction union organizing and leverage.

Sociologist Marc Silver (1986) provides a structural account of union power dynamics. He contends that the power relations in the construction industry are heavily influenced by the structural advantages associated with various locations in the production process. These structural advantages include factors such as the complexity of work, the centrality of production functions, and the union's size. For instance, workers in trades that require high technical skills or are central to the construction process, such as electricians and operating engineers, generally possess more bargaining power (Silver 1986:89). This power stems from the contractors' dependence on these skilled workers, who are not easily replaceable. Structurally, the unions' power is derived from their position in the production process and their ability to leverage labor supply. Unions with more central roles in production processes, such as those involved in foundational tasks, have more influence. Silver (1986:84) finds

that these “core unions,” which usually have larger memberships with more skills than the “peripheral unions,” tend to use cooperative tactics with management and have stronger relationships with larger employers. In contrast, peripheral unions, with less skilled workers and smaller memberships, tend to rely more on militant tactics. This results in a disadvantage for peripheral unions, as they must more often resort to riskier practices (Silver 1986).

### *Race and Gender*

Other authors explore the dynamics of race and gender in the building trades, highlighting the persistent hard-hat culture, where masculinity is defined by physical prowess and bravery. They contend that this machismo is not only a reaction to the dangers of the job but also a way for workers to assert their identity in the face of unsafe working conditions and fear of reprisals (Moccio 1992; Paap 2006). Tradesmen often refuse to confront contractors about unsafe working conditions and instead reinforce a self-consciously macho image to cope with the risks without losing face (Moccio 1992). Paap (2006) argues that the performative expectations of masculinity, which she terms “pigness,” compel white male workers to engage in behaviors that ultimately weaken their position within the employment market. These behaviors include working harder and more dangerously to prove their worth to their employers, thereby commodifying their bodies in a way that erodes their negotiating power and long-term ability to work. Paap (2006) highlights that these practices not only harm individual workers but also undermine the union movement and the working class as a whole.

The image of the building trades as an Archie Bunkeresque “good old boys” club that excludes women and people of color is pervasive. However, it only offers an incomplete

picture. For example, unions such as the Laborers' International Union of North America (LIUNA) are heavily Latino, but they are hardly bastions of egalitarianism. Indeed, sociologist David Fitzgerald (2004), in his study of transnationalism, found that the Southern California laborers' local union had a patronage network that excluded many first- and second-generation Mexican-American laborers from the more desirable jobs in the union. Instead, *Guadalupanos* received priority based on their connections to hometown networks in Mexico. This hardly squares with the good old boys' image that one gets from Paap (2006).

The emphasis on worker "machoness" also sidesteps the issue of employer responsibility. In a discussion of the "Big Blue" crane collapse that killed three workers at the then-under-construction Milwaukee Brewers' stadium, Paap (2006) contends that the workers' masculinities put them in harm's way. Paap contends that the men felt tremendous pressure to look tough and thus decided to conduct crane operations in high winds despite the danger and violation of Occupational Safety and Health Act (OSH Act) regulations. Paap, like the employer, contends that the men voluntarily put themselves in harm's way instead of refusing to complete the unsafe task. However, this sidesteps the issue of holding the employer accountable and significantly overlooks the power differential between the employer and workers.

Workers, especially in construction work, have contingent, temporary employment and tend to have little protection from arbitrary firings. Although *de jure* protection exists from retaliatory firings for refusing to do unsafe work, both by law and typically also by Collective Bargaining Agreement (CBA) language, the contingent, temporary nature of the work makes it difficult to prove retaliation. Often, employers will retaliate with a "reduction

in force” (i.e., a claim that there is a lack of work to keep someone employed) as a pretext. Since typically all that is needed to successfully fight a retaliation case is evidence that the employer had a legitimate business reason to lay someone off, the claim that the job was “winding down” will usually suffice, absent some other evidence that shows that the employer harbored animus over a refusal to work in unsafe conditions.

Moreover, a reputation as a union “troublemaker” could likely follow one throughout their time within the union, even after a retaliatory “layoff.” This, coupled with the fact that a layoff can often mean months of unemployment, makes refusing unsafe work much more difficult and fraught with worries about financial stability—paying rent, purchasing food, etc.—than Paap portrays it. So, while it is tempting to simply say that the workers should have turned down the unsafe task and rejected whatever masculine inclinations they have, the reality is much more complicated.

To be sure, there is significant occupational segregation in the building trades, mostly between unions classified as “basic crafts,” laborers, roofers, cement finishers, etc., and the “skilled crafts,” plumbers, pipe fitters, electricians, elevator constructors, etc. Blacks, and especially Latinos, are disproportionately employed in the “basic crafts,” which usually have lower pay and less generous benefits, while the “skilled crafts” are disproportionately white.<sup>6</sup> Across all unions, women are substantially underrepresented at only four percent of the unionized sector, despite being 14 percent of the construction workforce (U.S. Bureau of Labor Statistics 2024; The White House 2023). So, while construction unions have made progress in terms of racial and ethnic representativeness, they have made much less progress

---

<sup>6</sup>Statistics by craft are difficult to find. Much of this is based on my observations during my ten years as a union construction worker. While I am fully aware that my experience might not be representative, it is well-documented that the “basic crafts” are comprised heavily of Latino immigrant workers (See, for example, Erlich and Grabelsky (2005) and Grabelsky (2007)).

in recruiting women.

But they are trying. North America's Building Trades Unions (NABTU) has commissioned diversity, equity, and inclusion reports to identify areas where the building trades can improve the recruitment and retention of more diverse apprentice cohorts (Bilginsoy et al. 2023). As laudable as this is, it is unlikely to improve the issues regarding workplace safety that Paap (2006) has highlighted. This is because the difficulty of challenging management stems from more complex sources, such as the way in which the bargaining relationship is forged with the employer, a topic that will be discussed at great length in the following sections.

### ***The Rank and File***

More recently, the geographer Brower Brown's (2023) dissertation focused on construction unions working on solar panel farms in the Central Valley. His principal focus was on how these unions "gained power"—secured jobs that might have otherwise gone to non-union employers. He contends that familial ties and ties with community groups where social reproduction occurs build the power necessary for these gains. While the empirical data from the project are fantastic, and the project offers an important insight into how communities organize alongside labor, it tends to paint a rosier picture than is warranted. Because it starts with the question of how the union *gained power*, it tends to downplay the ways in which the unions' strategies were stuck within the fundamentally class-collaborationist mode of organizing that has defined building trades organizing for decades. Admirably, Brower Brown's ethnographic and interview methods illuminate worker experiences in a research field where many are content not to investigate the activity of the rank-and-file. Lamentably, this has come at the cost of paying scant attention to what happens at the union hall.



Concern with the rank-and-file dominates the more left-inclined intellectuals' research agenda, as the union leadership<sup>7</sup> is conceived of as reactionary or at least more conservative than the rank-and-file membership. An emphasis on union democracy has, understandably, meant an emphasis on the dynamics in the workplace and correspondingly strengthened the focus on rank-and-file activity. Indeed, a common refrain from this perspective is that “[t]he workplace (not the union hall) is the starting point for union democracy” (Parker and Gruelle 2005:1). From this perspective, since employment starts at the workplace, that is where workers find their power, and the union hall is more or less tangential to the overall leverage and collective bargaining of the union. Thus, the researcher interested in how unions wield power ought to look at the job site and not the union hall.

This is a persuasive argument that would arguably apply to the building and construction trade unions if they were organized like the rest of the labor movement. However, they do not. Unlike the rest of organized labor, construction workers are not hired and then organized; they are organized and then hired. Because of this, those who take the methodological approach described above overlook the opportunity to better understand how construction union-employer relations are actually forged, how and where those unions wield their power, and in which contexts that power is the strongest. This project seeks to illuminate these aspects and offer a clearer picture of how these relations are forged.

### 3. METHODS

#### *Historical-Comparative*

I primarily use comparative-historical methods to analyze the inter-union (Building Trades vs. non-Building Trades) cases. Following Lange (2013), I employ both within-

---

<sup>7</sup>Or what is often derisively called the “union bureaucracy” or “union officialdom.”

case and between-case (comparative) methods. This paper's within-case analyses are of the individual unions and their historical trajectories; this is the idiographic or historical element of the analysis. I trace each union's history and how institutions formed within the unions (e.g., the apprenticeship and hiring hall). This method offers a thick account of how the unions have evolved, challenged management at points, fought for or against policies, and made compromises at times. It also pays close attention to each moment's context to prevent a linear, teleological account of history that suggests that the present state was inevitable because of something that happened in the past. I draw primarily from secondary sources for these historical accounts. Additionally, I interviewed a former Oil, Chemical, and Atomic Workers Union (OCAW) member and official to supplement the historical account and gather more recent data about the current state of affairs of the union.<sup>8</sup>

The comparison or between-case analysis focuses both on the differences in features of the union and on the differences in their historical trajectory. Each case either uses or does not use a voluntary or involuntary contract type. In one case, construction unions (craft unions) are compared to International Association of Machinists and Aerospace Workers (IAM), a non-construction craft union; in another, construction unions, which have many members working in the petrochemical industry, are compared against United Steelworkers (USW), a non-construction union also with many members working in the petrochemical field.

### *Interviews*

I collected intra-building trade data from interviews with local union officials. I located these local unions using the National Labor Relations Board (NLRB) representation

---

<sup>8</sup>Now part of the United Steelworkers (USW).

case search tool. Approximately 98 building trades unions filed for a representation election in 2023. I identified cases by searching for company names that contained the words “construction,” “constructors,” “electrical,” “plumbing,” “mechanical,” “builder,” or “builders.” Cases in which the certified representative matched the names of the Building Trades’ constituent unions were also added to the list. I contacted each union to request an interview with the organizers involved in the respective campaign.

Three interviews were conducted: one with a Millwrights union organizer, another with the Operative Plasterers’ & Cement Masons’ Union (OPCIMA), and one with an organizer from the International Brotherhood of Electrical Workers (IBEW). In each semi-structured interview, I asked the organizer general questions about the local union and the particular organizing campaign, including how it was initiated, what specific strategies were used, and the outcome. Then, organizers were asked questions about the union’s political activity, including whether they were in any labor federations or coalitions with other labor organizations. They were also asked about any alliances they had with community groups. These cases (where the construction union departed from the norm) were compared with more general trends in the building trades unions.

#### **4. TYPES OF UNIONISMS**

Because one of the cases, the International Association of Machinists and Aerospace Workers (IAM), was selected because it is a craft union, a brief discussion of the differences between craft unions and industrial unions, as well as their histories, is helpful.

### *Craft and Industrial Unionism*

Craft unionism is when workers are organized into a union by craft (occupation) rather than by industry or employer (Suffern 1936:97).<sup>9</sup> Oh has defined craft unions and industrial unions concisely:

Craft unions are those whose jurisdiction concerns a particular skilled occupation, such as carpenters, plumbers, and painters, in which membership is a result of employing a particular occupation, regardless of employing industry. On the other hand, industrial unions define their jurisdictions in terms of particular industries, such as autoworkers and steelworkers. (1989:2)

William Green, former secretary-treasurer of the United Mine Workers of America (UMWA), similarly defined industrial unionism as “the organization of all men employed in an industry into one compact union,” while “[c]raft unionism means the organization of men employed in their respective crafts, resulting in numerous organizations within a particular industry” (Saposs 1935:69–70).

The earliest efforts in the US to organize workers collectively to assert their interests and preferences were generally organized around craft lines. Plumbers formed their union; machinists started one; so did the carpenters, etc. Eventually, the American Federation of Labor (AFL) formed in 1886, bringing many of these labor unions into a nationwide federation (Suffern 1936:97). Almost immediately, constituent unions battled over craft jurisdiction. For example, who should operate the mobile concrete mixers on the job site? Both the Teamsters and Operating Engineers claimed the work to be theirs at one point, leading to a jurisdictional dispute (Jaffe 1940). This is a feature of craft unionism that makes it more conservative: it pits workers and their unions against one another. Therefore, one of

---

<sup>9</sup>For a discussion on the differences between industrial and craft unions from a union activist perspective, see Parker (2008).

the most important functions of the newly formed federation was to quell these jurisdictional fights (Jaffe 1940).

Industrial unionism did not emerge until later. Industrial unions organize workers by employer or industry, irrespective of their craft, occupation, or skill level. Many early craft unionists in the AFL were skeptical of industrial unionism; they did not think it would be successful because many workers in mass production factories were immigrants with no specific craft or formal training and thus lacked the leverage typically associated with having a craft (Philip S. Foner 1994; Philip S Foner 1981). In contrast to a craft, like a machinist or a carpenter, which requires the worker to know all parts of the production process from beginning to end, industrial work is usually repetitive and requires little skill or knowledge of the entire production process. Because of this, craft unionism left industrial workers out of organized labor, and industrial unionists saw craft unionism as sclerotic.

Industrial unionism was largely a response to these perceived limitations of craft unionism. Exponents of industrial unionism believed that these limitations could be overcome by adopting the industrial unionist approach—organizing an entire industry regardless of occupational or craft classification. Sometimes, this is called “wall-to-wall” unionism (Meyers 2023). While craft unionism is largely associated with parochialism and thus a more conservative outlook, industrial unionism is often associated with a more progressive or even radical unionism.<sup>10</sup>

---

<sup>10</sup>Labor historians have debated the extent to which the AFL’s unionism was “declensionist”—conservative, “disengaged,” “voluntarist,” lacking class consciousness and an “agenda...of change for the nation as a whole” (Cobble 2013:61–62). I emphatically do *not* intend to take a position on this debate. Instead, I have tried to present, as best I can, the basic outline of the perspective that depicts the AFL unions as conservative without adopting this view as “correct.”

## 5. TYPES OF CONTRACTS AND BARGAINING

Two types of union bargaining correspond to two different contract types. Each corresponds to a different organizing method, and because of the different nature of each contract type, unions have to look for leverage in different places. Construction unions seek to maintain a monopoly over a “skilled pool of labor” to encourage employers to voluntarily contract with the union, while other unions tend to use more conflictual methods, such as NLRB elections, work stoppages, strikes, or other techniques, to compel the employer to bargain.

### *Industrial Bargaining*

The National Labor Relations Act (NLRA) was originally designed to be consistent with the way industrial unions are organized. The NLRA sets forth the process workers must follow to unionize a workplace. National Labor Relations Board (NLRB) administers the NLRA. The typical process begins with an effort to determine if there is a general interest in forming or joining a union among workers already hired. If there appears to be enough interest,

[E]mployee organizers [will] typically collect union interest cards, petitions, or other written statements from co-workers to show interest in union representation. Organizing efforts may be supported by an established union seeking to represent workers in the workplace. Workers may also form an independent union. (DOL n.d.: “How can I form a union?”).

If enough cards are collected to demonstrate majority status, the workers can ask the employer to voluntarily<sup>11</sup> recognize the union. If the employer refuses to recognize the union

---

<sup>11</sup>This is distinct from the voluntary negotiations in construction unionism. In this case, the employer may voluntarily recognize the union because they are certain that the majority of the workers want the union in the workplace, and conducting an election would be futile. In practice, this rarely happens, though.

voluntarily, workers have the option to strike or file a petition with the NLRB to request an election to certify the union as the collective bargaining representative of the workers, or both (DOL n.d.: “How can I form a union?”; NLRB n.d.). Once the union has demonstrated that the majority of workers want union representation (either through voluntary recognition by the employer or through an NLRB election), the union and employer will attempt to reach an initial agreement (Figure 1).

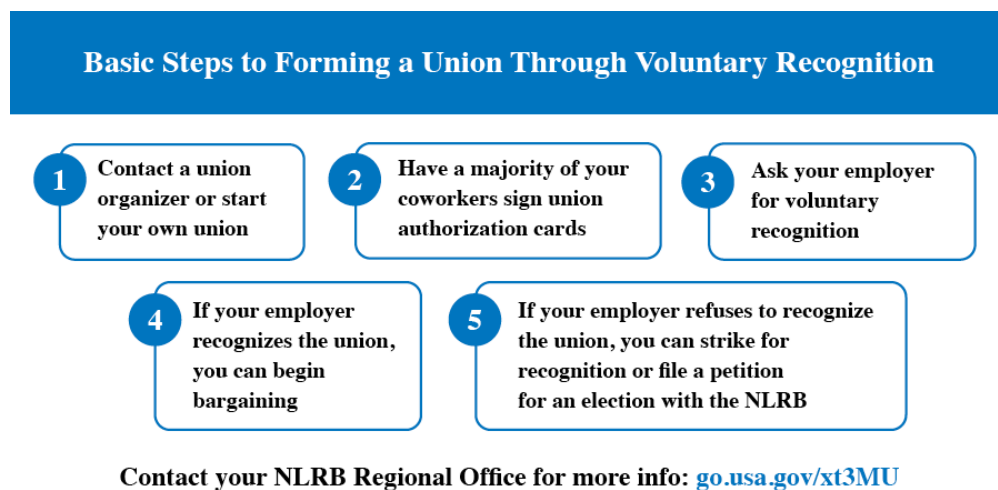


Figure 1: The steps for forming a union or joining an existing union.  
(Source: US Department of Labor.)

If the employer refuses to negotiate, the union can file an “unfair labor practice.” They can also strike or conduct other work stoppages until the recalcitrant employer meets their demands or agrees to negotiate. These are *coercive* strategies that are meant to compel the employer to act or not act in a particular way or to exact concessions. These strategies are also *relatively more conflictual* vis-à-vis the Building Trades’ approach.

### ***Building Trades Bargaining***

Building and construction trade unions typically do not organize workers directly at the workplace. Instead, they establish voluntary agreements with employers, which, once

expired, do not obligate the employer to continue negotiations. This weakens the union's bargaining leverage. These agreements, known as pre-hire agreements, are established before workers are hired.<sup>12</sup> Pre-hire agreements have a long history, predating their legitimation by Congress in 1959 with the Landrum-Griffin Labor-Management Reporting and Disclosure Act (LMRDA). Before this, the NLRB refused to intervene in the building and construction trades due to these agreements being technically in violation of the NLRA. The passage of the LMRDA created an exception for construction unions in Section 8(f). Thus, the use of pre-hire agreements by these unions was a preexisting practice and not a result of being forced into conservative organizing methods.

Each contract type points to a different orientation towards the boss and approach to mobilizing worker power. Perhaps most notable is the starting point of the unionization process (Figure 2). The "industrial" path (on the left) starts with the employees already hired. Sometimes, the effort is primarily driven by union staff; other times, it can be driven more by shop floor organizers from the rank-and-file. Either way, the approach is to organize workers around issues they are facing in the workplace and compel the employer to negotiate a contract through coercive measures such as strikes or using the state as an instrument to compel the employer to bargain in good faith. Building and construction trade unions largely dispense with this approach; instead, they try to entice employers based on their members' skills and training. However, the building and construction trades are not forced by law to organize in this way; it is their choice to organize in this way or another way. This construction union path is depicted on the right.

---

<sup>12</sup>The union does not need to organize the workers; it only needs to persuade the employer to *voluntarily* enter into an agreement.



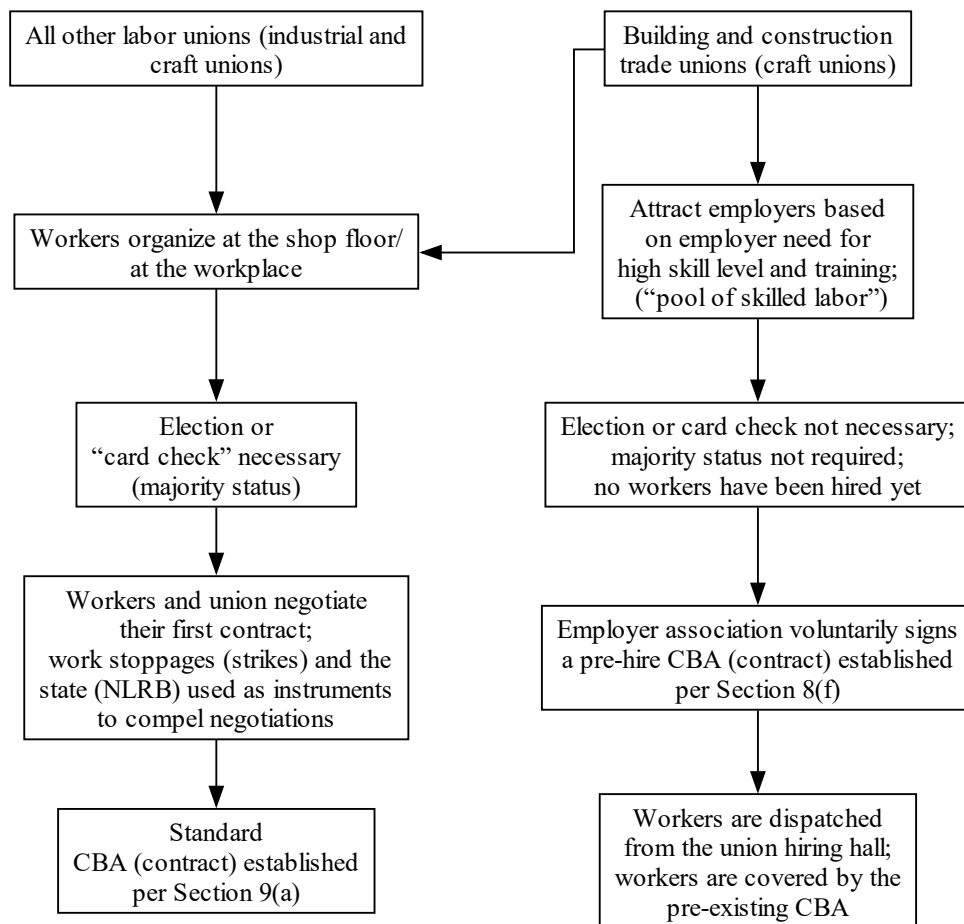


Figure 2: The industrial mode of organizing (left) and the construction mode of organizing (right). Construction unions may follow either path, but other unions may not voluntarily negotiate the way that construction unions can.

One practical reason for the development of pre-hire agreements in the building and construction trades is the temporary nature of the work. Because of the temporary nature of the work, many union halls maintain a hiring hall with dispatch procedures for members out of work. At the end of the job assignment, laid-off union members may return to the union's hiring hall for employment somewhere else by signing the union's out-of-work list. The union will dispatch its members to jobs as needed by the employer. Because of the temporary nature of the job, organizing via the traditional route is much more challenging,

as workers are laid off frequently, and the employer has no permanent workforce, at least not like other workplaces.

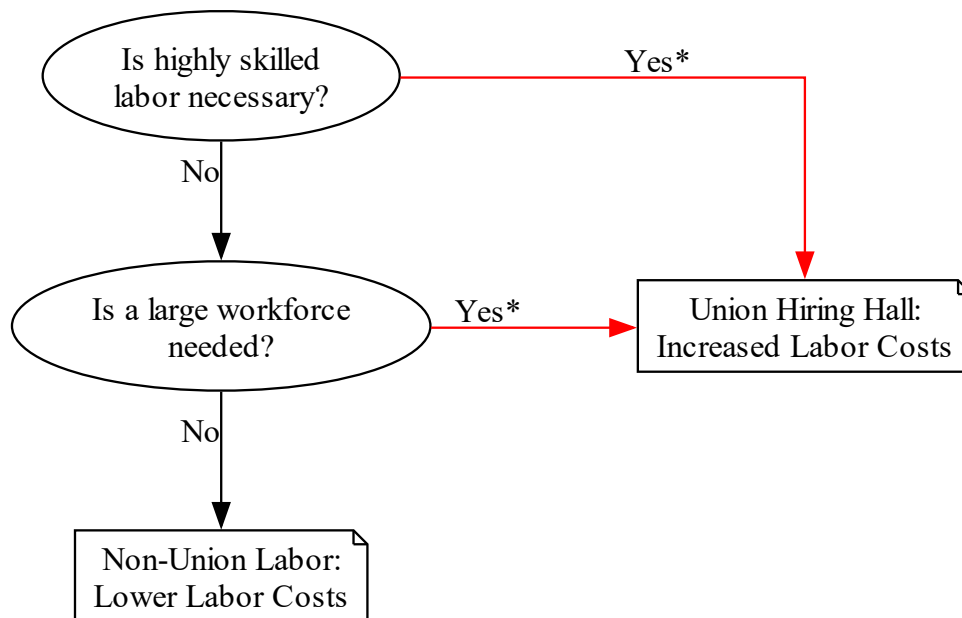
From that perspective, pre-hire agreements are a practical response to the specific unionization challenges faced in the construction industry. However, this particular arrangement has serious consequences for how construction unions must situate themselves in relation to the employer. Because of the voluntary nature of the agreements, the employer may simply choose to leave the collective bargaining relationship at the contract's expiration. Thus, construction unions that follow this method of organizing generally must maintain a much more employer-friendly orientation than unions that organize through the other route. Simply put, if the employer feels that the workers are pushing too hard to enforce their contract or that the union has become too radical, the employer is free to leave at the next bargaining round.

The Building Trades have more leverage when the project requires highly skilled workers because of the sophistication of the job or when the job is so large that the employer cannot sufficiently staff the job without using the union's hiring hall (these often overlap). In other words, a building trades union wields the greatest power when the employer has a sophisticated project that requires highly skilled workers to complete the project successfully. When this is the case, the employer has little choice but to hire union workers (Figure 3). Rather than organizing workers on the shop floor to demand concessions and better working conditions from their employers, construction unions use their leverage as a particularly skilled workforce that employers need to complete their projects. Of course, this is also not absolute. "Highly skilled" is relative to the skill level of the non-union workers (i.e., those without union training). If the nonunion's training improves and the trade is "deskilled"

(i.e., new materials and installation techniques are introduced that are easier to install), the union has to be cautious regarding how strongly it asserts itself and pressures employers. For example, when flexible plastic PEX piping was introduced, which is much easier to install than copper tubing (or galvanized piping, which was popular in the 1950s and 1960s), it threatened the plumbers' union's leverage. Its installation requires little training and no knowledge of soldering techniques. The United Association of Plumbers and Pipefitters (UA) opposed its introduction because it would deskill installation and fought unsuccessfully against its adoption as an acceptable building material in the California Building Code (Faloon 2002; *California Caught in Debate Over Acceptability of PEX Piping* 2004). For the UA, this represents a substantial loss and a victory for the non-union, insofar as union training is now less valuable to some extent.

This threat inclines building trades unions to be employer-friendly. For example, the union does not have exclusive control over its training program. Instead, each union has a Joint Apprenticeship Training Committee (JATC) that oversees the training process and curriculum development. The JATC is a committee comprised of 50 percent labor and 50 percent management, each having an equal share in the control of the apprenticeship program. This promotes greater cooperation between labor and management. From this perspective, the union and management are a team. They have a mutual interest in reproducing each successive generation of union construction workers. Significantly, this requires the union to cede, at least partially, control over the process to the employer.

The hiring hall is an integral component of the pre-hire contract arrangement. Without the hiring hall, the pre-hire scheme would not be tenable. A skilled "pool of labor" ready to be dispatched is necessary to attract employers and convince them to *voluntarily* sign a



\*Red "Yes" responses indicate points of leverage favorable to the union.

Figure 3: Since negotiations between construction unions and employers are voluntary, construction unions typically have more leverage where the employer requires a more skilled workforce or where the job is large and requires many employees.

pre-hire agreement. This scheme is well-suited for construction because of the contingent nature of construction work. As Murphy explains:

Many construction industry employers hire employees, as the need arises, to work on a particular project and to be laid off when their services are no longer required. Most construction workers are organized into union hiring halls. A hiring hall, or work referral system, is an arrangement under which a union that "has control of or access to a particular labor pool agrees to supply workers to an employer upon request." When an employer in the construction industry needs skilled workers for a project, he often seeks such workers from the union hiring hall. Historically, the practice in the construction industry was for the employer to sign an agreement with the hiring hall union, which set the terms and conditions of employment for workers not yet hired. These contracts, known as pre-hire agreements, often contemplated a tenure of years, spanning several projects. Rather than having to renegotiate the terms and conditions of employment on each new project, the employer was assured a ready supply of skilled workers and predictable labor costs upon which to base his bids on projects subcontracted by a general contractor. Furthermore, construction workers had the benefit of a central clearinghouse for employment opportunities. (Murphy

1982:1014–15)

This configuration, detailed in Figure 4, is the scheme still used in construction unions to this day.

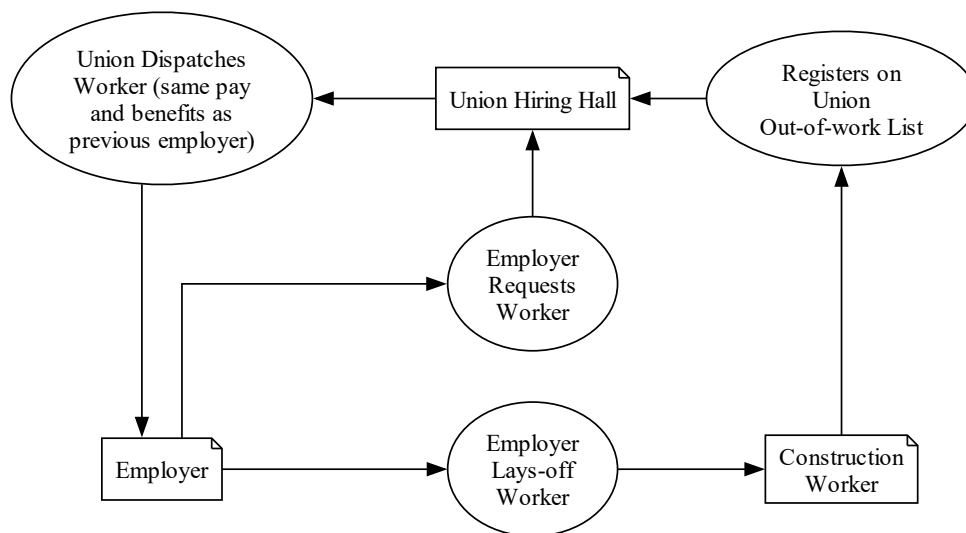


Figure 4: Construction unions usually maintain a hiring hall. When employers require more workers for their projects, they contact the hiring hall to request workers to be dispatched to the job site.

## 6. AN OUTLIER IN THE LABOR MOVEMENT

Unions often find themselves at the crossroads of political and social movements, particularly environmental movements, raising questions about their alliances and priorities. The United Auto Workers (UAW) could be negatively affected by transitions from fossil fuel-burning vehicles to electric, insofar as those new plants may not be unionized, and such a transition may result in job losses (Feeley 2023). The United Steelworkers (USW) faces more job losses at oil refineries<sup>13</sup> if climate policy restricts the operation of those facilities. Building trades workers face unemployment if pipelines cease to be built and petrochemical refineries are shut down. Despite the contradictions, many labor unions have taken a long-

<sup>13</sup>Some job losses were already brought on by the pandemic.

term approach to the problem. They want green, environmentally friendly jobs that are also good jobs with union wages and benefits. However, the Building Trades unions have not been among those unions.

### ***Dakota Access Pipeline and Standing Rock***

The controversy surrounding the Dakota Access Pipeline (DAPL) brought to the fore the political differences vis-à-vis the Building Trades' unions on the one hand and the rest of the labor movement on the other. The plan to build a 1,168-mile crude oil pipeline, called the DAPL, stretching from the Bakken and Three Forks production regions of North Dakota to Patoka, Illinois, was announced in 2014 by Dakota Access, LLC (O'Connell 2018; Saha 2016; US Army Corps of Engineers n.d.). For the first roughly two years after the announcement of the project, it, by and large, did not draw public attention or awareness. However, in the fall of 2016, it became a flashpoint in the national political scene, with environmental groups and Native American tribes on one side and petrochemical companies on the other.

The opposition to the pipeline culminated in protests in Sioux County, North Dakota, in 2016. The pipeline was slated to run through the Standing Rock Sioux Tribe reservation, which opponents of the project contended would “endanger[] sacred sites and drinking water” (Saha 2016). Members of the Standing Rock Tribe claimed that the project violated the principles of tribal sovereignty and threatened the continued existence of the tribe (Massie 2016). Moreover, they claimed that the U.S. government had not adequately consulted the tribal government, which violated U.S. treaties and the United Nations Declaration on the Rights of Indigenous Peoples (Saha 2016). In addition to bringing thousands of Native American activists in opposition to the pipeline from across the country to Standing Rock, environmentalists and climate activists were equally concerned not only with the

environmental impact of expanding fossil fuel infrastructure but also with the potential hazards of oil spills and other accidents endemic to the petrochemical industry (Saha 2016).

The Standing Rock Sioux Tribe filed a lawsuit against the US Army Corps of Engineers in an attempt to halt the project. On September 9, 2016, a federal judge denied the tribe's request to suspend construction. However, within hours of the court's ruling, the Obama Administration ordered the Army Corps of Engineers to put the project on hold and "determine whether it will need to reconsider any of its previous decisions regarding the Lake Oahe site under the National Environmental Policy Act (NEPA) or other federal laws" (Office of Public Affairs 2016).

Many labor organizations supported the Standing Rock Sioux tribe and the environmentalists. For example, the Service Employees International Union (SEIU) emphasized that more than jobs were at stake; the pipeline would threaten the health and safety of "low income communities and communities of color, including those where many SEIU members live and work" (NLF 2016). Other unions, including National Nurses United and the Communication Workers of America, also expressed these solidarities with environmental and other movements (NLF 2016). Additionally, a coalition of trade unions and labor groups, the Labor Coalition for Community Action (LCCA), collectively issued a statement opposing the pipeline. This coalition includes the A. Phillip Randolph Institute, the Asian Pacific American Labor Alliance, the Coalition of Black Trade Unionists, the Coalition of Labor Union Women, the Labor Council for Latin American Advancement, and Pride at Work (APALA 2016).

The group emphasized that labor interests are not at odds with environmental and Native American concerns and interests:

We remain committed to fighting the corporate interests that back this project and name this pipeline “a pipeline of corporate greed.” We challenge the labor movement to strategize on how to better engage and include Native people and other marginalized populations into the labor movement as a whole. (APALA 2016)

However, the LCCA also recognized that simply shutting down the construction of the pipeline would not be sufficient; the creation of good jobs to replace the ones lost by halting the pipeline’s construction was necessary:

Lastly, we applaud the many labor unions working to create a new economy with good green jobs and more sustainable employment opportunities for all. We also encourage key stakeholders — labor unions including the building trades, the Standing Rock Sioux Tribe, and others who would be impacted — to come together to discuss a collective resolution. (APALA 2016)

Finally, the SEIU released a statement emphasizing the importance of both good jobs *and* the environment. The statement is remarkably similar to the *Just Transition* idea that the Oil, Chemical and Atomic Workers Union (OCAW) first crafted decades earlier and that the United Steelworkers (USW) still embraces today:<sup>14</sup>

SEIU members recognize the importance of these jobs for these workers and their families and we demand that our government protect all workers whose lives and livelihoods are impacted by a shift away from fossil fuels. Our government must make the needed investments into building a new clean economy, including a just transition of workers from the fossil fuel workforce, by investing in clean energy and rebuilding and repairing much of our nation’s aging infrastructure, including existing pipelines, which are in great need of repair. We will fight for an economy and democracy in which working families can live and work in a clean environment with good jobs for all. (NLF 2016)

The SEIU and other unions opposed to the pipeline were engaged in a collective struggle against the company that planned to build a pipeline through the community,

---

<sup>14</sup>The USW is a union that both has many workers in the petrochemical industry *and* supports green energy policy. They even support the cessation of operations of many of the plants in which their members work as part of that commitment. This is discussed at greater length in Section 8.2: “The Oil Chemical and Atomic Workers & United Steelworkers”.



polluting the land and water without any regard for indigenous groups, such as the Standing Rock Sioux. The LCCA made clear in its statement that it was against the “corporate greed” that the project represented (APALA 2016).

North America’s Building Trades Unions, a trade department of the AFL-CIO representing 14 constituent building trades unions, issued a statement within days condemning the actions of the Obama Administration. On September 14, 2016, they expressed their “disappointment” with the Obama Administration in the latter’s willingness to “halt the lawful construction” of the DAPL, emphasized the advanced training of their skilled craftworkers, and contended that many safety redundancies would be in place while the project was underway (NABTU 2016). Further, they chided the Executive Branch for its “disregard” of “the facts,” the “exhaustive permitting and review process, stakeholder engagement,” and “the ruling of a Federal Court Judge,” and they lamented the loss of construction jobs with “family sustaining wages and benefits” (NABTU 2016).

Early the following month, the NABTU, with signatures from the presidents of five construction unions, wrote a letter directly to the White House reiterating their concerns. In the letter, they underscored that many of their 8,000 members who were working on the project were already struggling and facing hardship because of unemployment caused by the executive branch’s intervention. Additionally, they emphasized that this intervention sets a “chilling” precedent that would undermine “future investment in necessary U.S. infrastructure—from highways and bridges to ports and factories” and that “[i]f companies like Energy Transfer Partners cannot trust that the regulatory process outlined in federal law will be upheld, who will continue to invest in America?” (Callahan et al. 2016).

## 7. UNION MEMBERS AS SHAREHOLDERS

The NABTU has clearly taken a very different position from the rest of organized labor. But why are the building trades taking such a different stance? One might think that they would also be guided by a broader notion of unionism; after all, their members also live and work in the communities that are harmed by global warming. That is, the ranks of these unions are also, often enough, composed of the same people that the LCCA and unions like the SEIU are defending from being harmed by the pipeline. What principles guide this sort of unionism?

A 2015 interview with Sean McGarvey, President of NABTU, provides some answers. McGarvey met with Martin Durbin, President and CEO of America's Natural Gas Alliance (ANGA), for an interview later released on YouTube. At one point, Durbin spoke about his time on the American Petroleum Institute's labor-management board in Pennsylvania. Durbin explained that when the industry moved into Pennsylvania, labor and management did not have an existing relationship; however, eventually, they found that, according to Durbin, their interests overlapped and that both sides mutually benefited from the relationship:

Pennsylvania, I thought, was a really interesting example where we saw an industry move in and where the [labor-management] relationship didn't really exist, but over time, everyone kind of realized that, hey, wait a minute, you know, this is working for all of us. (*The Next Infrastructure Challenge* 2015)

When Durbin asked McGarvey how he thought these relationships with management had been progressing, McGarvey responded:

It's really been interesting to work on building these relationships. We have so much in common as opposed to the things we disagree with, and we've gotten together and said, "Let's really examine these things we have in common," and then once

we examine them, we said, “Well, how do we partner to move the issues along that we really agree with that are in the best interest of our country and our economy?” And [we have had] the opportunity to work with really smart people in really iconic great companies that have been around for a hundred years or have been around for 20 years. . . I serve a membership; my job is to create economic opportunity for my membership. . . That’s what I’m supposed to do and when you run a company, you have a board of directors, and you have shareholders to answer to if you’re publicly traded. Both of those things are true, but then there’s this meeting in the middle: how do we create value for shareholders? How do I create value for my members and do it in a responsible way, working with partners who want to work with us responsibly to create value for their shareholders? . . . [W]hen you have the opportunity to have those conversations you say, “gosh there [are] so many things that we can do together and do better together,” and I [have] got to tell you. . . it’s always kind of been the way [of] the building trades. If you go back to a great quote from George Meany, back when he was a plumber in New York City and a local leader, they never went on strike; they never had a strike even during that tumultuous time down there. It’s because [the union’s] contractors needed to be successful for his plumbers to work. (*The Next Infrastructure Challenge* 2015)

McGarvey’s answers exemplify the class collaborationist approach taken by the NABTU. Unlike other unions, the NABTU has prioritized its relationship with industry over solidarities with Native American tribes and environmental groups. McGarvey made it very clear that he thinks the building trades should prioritize their relationships with management by finding what they have in common over policies that might benefit workers or the community more broadly. The analogy of a building trades leader to essentially a CEO is equally telling. From this perspective, union members become not much more than “shareholders,” who pay dues and other fees in exchange for a “return” in the form of employment covered by a collective bargaining agreement. Rather than these agreements being forged as a result of workplace organizing, where work stoppages or other such actions are the crux of such struggles, they are forged in labor-management board meetings, where the parties find ways to collectively create “value” for their shareholders or members. Indeed, as the George Meany reference makes clear, strikes are rare to nonexistent by design.

Of course, strikes are rare in general, but as a relative measure, they are even less frequent in construction. In 2022, 14.3 million workers were unionized; approximately 3 million (20.9 percent) of them worked in construction (BLS 2024). That same year, there were 413 labor actions, such as strikes or other work stoppages, but only three were in the construction industry (0.73 percent), meaning that 99.3 percent of labor actions were outside the construction industry (ILR School n.d.). This is about one-tenth the “expected rate” if construction workers had labor actions at a rate equal to their proportion of the unionized workforce. That is, strike activity, as rare as it might be, is coming disproportionately from non-construction sectors (Table 1).

	All	Construction	
Unionized Workforce	14.3 million	3 million	20.9 %
Labor Actions	413	3	0.73 %

Table 1: Construction unions represent nearly 21 percent of unionized workers but were involved in less than one percent of labor actions in 2023 (ILR School n.d.).

It is also true that class collaboration is not limited to petrochemical work and that the building trades could, at least in theory, choose class collaboration with the green energy industry. But this would only be possible if the green energy industry had a reason to collaborate in the first place. Recall that construction collective bargaining agreements are voluntary and that construction employers usually only have an incentive to sign these agreements if their jobs require highly skilled labor or if they would benefit from the quick deployment of many workers. Green energy companies have, by and large, been able to build without union labor (Scheiber 2021), suggesting that they either do not need these things or have been able to obtain them elsewhere (which would mean that the union is losing

its monopoly over these commodities). So, there is no reason for those employers to pay union wages and into union benefits and pension funds if they don't need to. Simply put, green energy has largely not needed construction unions, and thus, construction unions have largely failed to make inroads in green energy.

## 8. COMPARING THE BUILDING TRADES WITH OTHER UNIONS

I selected two cases that share similar features with the building and construction trades for comparison: the Oil, Chemical and Atomic Workers Union (OCAW; now part of the Steelworkers [USW]), a union that has many members working in the petrochemical industry, and the International Association of Machinists and Aerospace Workers (IAM), a craft union that does not organize workers as building trades unions do.

### *The United Association of Plumbers and Pipe Fitters (UA) Local 189*

I chose United Association of Plumbers and Pipefitters (UA) Local 189 in Columbus, Ohio, because of the United Association of Plumbers and Pipefitters (UA)'s large amount of pipeline and petrochemical refinery work. I relied on Richard Schneirov's *Pride and Solidarity* for historical background on Local 189. Though it focuses specifically on Columbus, it is situated in the broader craft union developments of the time. Because both the United Steelworkers (USW)/Oil, Chemical and Atomic Workers Union (OCAW) share a large amount of petrochemical work, this made Local 189 an ideal comparative case.

In his masterful study of the United Association of Plumbers and Pipe Fitters (UA) Local 189 in Columbus, Ohio, Richard Schneirov (1993) details the uniqueness of construction unionism. The formation of the UA began in the late 1880s; before then, plumbers and pipefitters were largely unorganized. To the extent that they did form unions, the organizations were usually temporary, to meet a specific need at a particular time, and were

hyper-local and fragmented, without any international<sup>15</sup> to push for the interests of plumbers and pipefitters across the nation (1993:58). The first boon for pipe workers was not an organizing campaign undertaken by the union, but the American Federation of Labor's (AFL) eight-hour-day movement (1993:11, 43–45). Many pipe tradesmen in the late 1880s and early 1890s worked upwards of ten hours a day, sometimes up to fourteen hours per day. This movement was extremely important because “Hitherto, [unions] had only been able to mobilize large groups of workers for short periods of time” (1993:43–45). It also broadened solidarities, appealing to workers of “all nationalities, races, trades, industries, skill levels, and genders” (1993:43). Though the eight-hour-day movement was largely associated with unionism, which provoked strong resistance from employers, it even appealed to non-union workers (1993:45). From that perspective, it was also able to “cement union sentiment and loyalty among large numbers of nonunion workers” (1993:45). In contradistinction to earlier union efforts, this brought unions together across the nation, culminating in a nationwide eight-hour-day strike on May 1, 1886. However, three days later, the movement suffered a significant setback when anarchists bombed Haymarket Square in Chicago, killing seven police officers (1993:45).

Yet, the eight-hour day movement's efforts proved to be more durable, and on November 15, 1889, it gave rise to the formation of the first union of journeymen plumbers and pipe fitters in Columbus: Local 5180 (Schneirov 1993:45). In 1890, Columbus streetcar workers continued to push for shorter workdays. They demanded a reduction from ten to nine work hours per day. In this context, the plumbers and pipe fitters were well positioned to exact concessions from the master plumbers because of fears that the latter could not defeat the

---

<sup>15</sup>A term that, in the context of US and Canadian unions, means a national organization.

former (1993:45–46). The master plumbers agreed to a reduction in work hours without a loss in pay. However, the Local Union was inexperienced in negotiations with the master plumbers, and they were willing to make concessions that would allow the master plumbers to severely restrict when overtime pay would start (1993:46–47). The union sought the advice of the AFL founder Samuel Gompers, who disabused the local union of making concessions (1993:46–47). The two sides eventually reached a written agreement, the first of its kind in the trade.

This encouraged the formation of the city’s first Building Trades Council (BTC). Despite earlier challenges in uniting the trades, the Council brought all crafts together: bricklayers, lathers, painters, carpenters, tanners, and plumbers and pipe fitters, under the banner popularized by the Knights of Labor: “An injury to one is the concern of all” (Schneirov 1993:47). This inter-union trade solidarity set the stage for even more militancy. The BTC opted, in the words of the Columbus Dispatch, “for ‘radical measures’ at the opening of the ensuing building season” (1993:47). They demanded that union workers, no matter the craft or trade, perform the work at every union job site (1993:47). If their demand was not honored, the BTC threatened not to “touch any job” where non-union workers were present. Simply put, this meant that if one craft was unionized on a job site, union workers on the site would refuse to work there unless every other craft was also unionized.

But by 1892, the union had pivoted to issues concerning the integrity of the craft. The union framed the integrity of the craft in the language of public health. The Columbus Trades and Labor Assembly contended that “nearly all the houses that are built for renting purposes are fitted with bad plumbing causing disease and death” (Schneirov 1993:47–48). In response to these issues, the Assembly urged the city to adopt building codes and endorsed a union

plumber for city inspector (1993:48). In addition, the union began to place greater emphasis on the development of an apprenticeship program; the union asked the master plumbers for another raise and the establishment of an apprenticeship program “governing the number and conduct of apprentices” (1993:48). The master plumbers refused, and the union went on strike. The master plumbers brought in strikebreakers, and the union eventually lost.

But the plumbers and pipe fitters union had not entirely abandoned broader solidarities. They continued to participate in the BTC and the Trades and Labor Assembly in an effort to “advanc[e] labor’s political strength” (Schneirov 1993:50). One leader, Louis Bauman, epitomized the class-based orientation of the era. Bauman was the vice president of the Trades and Labor Assembly in 1893, and, beginning in 1894, he also served as the president of Local 57 of the plumbers and pipe fitters. He “was a Labor-Populist, aligned with radical farmers in the Farmers’ Alliances and the National People’s party and with the union men who felt that something should be done to change an economic system in which workingmen were impoverished while Wall Street banks and national corporations dominated the government” (1993:50). The Columbus Trades and Labor Assembly’s 1894 constitution exemplified these radical principles:

It is self-evident that, as the power of capital combines and increases, the political freedom of the masses becomes more and more a delusive force. There can be no harmony between capital and labor under the present industrial system for the simple reason that capital, in its modern character, consists very largely of rent, interest, and profits, extorted from the producers, who possess neither the land nor the means of production, and are therefore compelled to sell their labor and brains or both to the possessor of the land and means of production at such prices as an uncertain and speculative market may allow. Organization of Trades and Labor Unions is one of the most effective means to check the evil outgrowths of the prevailing system. (Schneirov 1993:50)

However, the radicalism of the nascent pipe trade union was fraught with contradic-



tions. In the early 1890s, the union had moved to exclusive agreements. These agreements offered lucrative benefits to entice the master plumbers into a contract. Not only did they limit the ability of smaller firms to compete with the master plumbers by requiring union plumbers and fitters to work exclusively for master plumbers, but they also precluded workers from “handl[ing] any materials not purchased by their immediate employers” (Schneirov 1993:54). In exchange, the master plumbers agreed to allow “the union to set standard rates for the trade” and “offered local unions benefits that they had great difficulty winning otherwise: a closed shop, the eight-hour day, and stable or increased wages” (1993:54). At the same time, these agreements undercut the union’s bargaining power and leverage and, in many ways, the interests of union members. In particular, it limited employment opportunities for union members because non-signatory contractors could not employ union members even when paying union wages and adhering to union rules; this also hindered “the freedom of action of the unions” (1993:54). Eventually, the contractors’ demands undercut the union’s power so much that the union abandoned the practice of exclusive agreements in 1899 (1993:54–55).

Ironically, the abandonment of these exclusive agreements did not trigger union militancy or radicalism, and by the early 1900s, the union had all but entirely abandoned any commitment to improving working conditions; significantly, they also abandoned the broader labor solidarities that had defined the earlier period (Schneirov 1993:51–54). If one word were to characterize this period, it would be “stability.” Many unions in the late 1800s were temporary organizations. Indeed, as Schneirov observed, the telephone book and the UA’s official journal suddenly ceased to list Columbus UA Local 57 in 1898; it had completely disappeared without any historical record of what precipitated its collapse (1993:51).

To achieve stability, American craft unions, following in the tradition spearheaded by the British craft unions, raised their union dues and implemented a quasi-welfare state. At the time, there was no “social safety net” provided by the government, unemployment benefits, workers’ compensation, social security benefits, nor Medicare or Medicaid.

With increased dues, unions were able to finance these benefits and, consequently, keep construction workers in the union much longer than they had previously (Schneirov 1993:59). The Columbus Plumbers and Pipe Fitters Union could also afford to hire professional staff and leadership for the first time. The union hired full-time business agents, who served as “walking delegates,” policing the job sites for contract violations and craft jurisdictional violations by the employers (1993:60). The business agent was also an organizer, enrolling new members and “pulling a job” if he could not resolve a workplace dispute through negotiation (1993:60). And though most employers did not utilize it, in November 1907, the union established a hiring hall as an institution that would later become a staple of construction unionism; the hiring hall required laid-off members to provide the business agent their names so that he could register them on the list of unemployed members and dispatch them, beginning with the first member laid off to the member most recently laid off, at the employer’s request (1993:60–61). Finally, this era ushered in intra-craft solidarity: plumbers and fitters, for the first time, began to see themselves not as individuals trying to “better themselves in the marketplace,” hoping not to ultimately become independent masters, but as workers with shared interests with other plumbers and fitters (1993:61). These developments transformed the union into a more durable institution.

*A contemporary view.* Many elements of fin-de-siècle pipe trades unionism are still present in many construction unions today. Schneirov (1993) contends that plumbers

and pipefitters have had to balance two sometimes contradictory identities. One is that they are workers with a set of common class interests with other workers in a labor movement built around solidarity for “union brothers and sisters.” But from another perspective, they are part of a craft community that values craftsmanship and takes pride in its work, a value that they share with their employer (Schneirov 1993:3–4). A construction journeyworker is distinct in this regard from other blue-collar workers, such as factory workers on an assembly line, who do a repetitive task that can be easily taught (Schneirov 1993:5). Before one can become a journeyworker, one must complete an apprenticeship, which requires learning how to apply general plumbing and pipe fitting installation techniques, principles, and codes to specific circumstances. This requires a rigorous training program to prepare apprentices for their careers. As a consequence, these workers have gained prestige and a sort of elite status that many other blue-collar workers could only dream of.

At the same time, this elite status and craft pride also came with a much higher degree of collaboration and a much closer relationship with the boss. In fact, in Local 189, as is the case with many other plumber locals across the country, the line could be blurred between employer and union member. Some union collective bargaining agreements even allow for contractors, that is, the owners of the enterprises, to work on projects alongside union employees (Schneirov 1993:5). This is also the case with UA Local 342 in the San Francisco Bay Area. Local 342 allows employers no more than one owner of the company to “work with the tools,” so long as “the Individual Employer has not more than two (2) journeymen and one (1) apprentice dispatched” (Local 342 MLA). Many of these employers who also “work with the tools” are members of the union. For example, Brown 3 Plumbing in Oakland, California, is owned by William Brown, a Local 342 member who also works

on many of his company's projects (Brown Plumbing n.d.). LJ Kruse Company in Berkeley, California, similarly has members of the Kruse family who also work on the job site. Will Kruse has completed the 5-year apprenticeship and serves as the company's Vice President and Service Manager (LJ Kruse n.d.). He can be seen on the company's website donning construction gear with a dirty high-visibility vest and jeans and on a job site with a pile of steel framing in the background. At Local 159 in Martinez, California, Brian Lescure, part of the Lescure family that owns the Lescure Company, is both the Union's Apprenticeship Coordinator and elected to the Union's Examining Board (Lescure 2023).

This overlap can give workers a sense, much more so than in other industries, that both employer and employee are on the same "team." Unlike an industry such as manufacturing, where large amounts of capital are necessary to start a business, starting a plumbing business is not unrealizable. One survey even found that half of a large plumbers' local union "had thought of entering business on their own at one time or another, though most had not done so" (Schneirov 1993:5). Put straightforwardly, this means that half of the local union's workers, that is, sellers of labor power, also imagine a future as buyers of that same labor power. Schneirov contends that this blurring of the lines and class-collaborative dynamic creates a "craft community" where employers and workers share a common background that "breed[s] an ethic of cooperation among individuals based on mutual respect for craft knowledge, skill, and ingenuity" (Schneirov 1993:6). And "Even those union members who have never considered contracting have often bid independently on small jobs and are familiar with the psychology of being an entrepreneur" (Schneirov 1993:5-6).

### *The Oil Chemical and Atomic Workers & United Steelworkers*

The United Steel Workers (USW) and the Building Trades both have substantial work in the petrochemical industry. This makes the USW an ideal comparative case for analyzing whether unions simply stand behind their employer when threatened with job loss. Recall that the United Association of Plumbers and Pipefitters (UA) stood behind petrochemical pipeline companies when the DAPL protests threatened their jobs. The USW, however, has taken a much different approach to climate change issues and has even advocated for plans that would destroy many of their jobs, as long as workers are protected by the *Just Transition* program that would ensure that they find other employment and are protected by a generous social safety net.

The Oil, Chemical and Atomic Workers Union (OCAW) represented workers in the petrochemical industry for much of the 20th century, but by the 1980s, membership numbers began to decline significantly. They merged with several other unions to form the Paper, Allied-Industrial, Chemical, and Energy Workers International Union (PACE) in 1999. However, that merger only lasted six years, and they merged with the USW in 2005.

The OCAW was much more radical than other unions. As Mark Dudzic, a former leader and retired member, once described it: “The oil industry never really accepted the union as a junior partner. The union was never able to win the union shop and all the other accouterments of class peace. As a result, the culture of militancy was deeply embedded in the union” (Leopold 2007). Though the OCAW is now dissolved and has gone through two mergers, it is worth tracing the history to the present day to analyze if their radical history has had any lasting effect and if the lack of class peace persists.

Unlike the Building Trades, the USW is currently a supporter of the Labor for Single Payer Health Care campaign, which is a broad social-wage political effort. From that perspective, the USW is not just focused singularly on the interests of its members but instead is committed to broader political struggles. Strikingly, the USW even supports a transition from dirty energy to clean energy jobs. This is significant for a union that has many workers in the petrochemical industry. Such a transition would end their employment at oil refineries and require a new, more challenging struggle to establish a union foothold in new clean-energy sectors, sectors that have been highly resistant to unionization. Nevertheless, the USW has adopted a broader, more long-term vision, one much more solidaristic with other environmental activist groups than the Building Trades have.

***OCAW and Tony Mazzochi.*** Les Leopold, in *The Man Who Hated Work but Loved Labor*, recounts the story of Tony Mazzocchi, former long-time Oil, Chemical and Atomic Workers Union (OCAW) official and organizer. Looking at the history of this union with Mazzocchi as the protagonist, Leopold highlights the social unionism that he helped craft in the postwar period in New York (Leopold 2007:16).

Mazzocchi started his employment at Helena Rubinstein Incorporated on May 1, 1950. Union leaders of the left-leaning District 65 had recruited Mazzocchi to raid an anti-communist CIO union. At the time, District 65 was the largest left-leaning union in New York City. It had disaffiliated with the Retail, Wholesale, and Department Store Union (RWDSU) in August 1948 after the national union had ordered the District to comply with the Taft-Hartley Act (Leopold 2007), an act passed in 1947 that substantially gutted the Wagner Act and imposed onerous burdens and restrictions on labor unions, severely curtailing their power, so much so that it was commonly denounced by labor as the “Slave Labor Bill” (Figure

5). The District 65 leaders were Communist Party members or sympathizers and wanted Mazzocchi to obtain employment at a unionized New York City cosmetics plant, Helena Rubinstein Incorporated, as a “colonizer.” His role would be to organize a progressive cadre within the rank-and-file of the Gas, Coke, and Chemical Workers UGCCWA local union, which was present at the plant (Leopold 2007:71). They wanted him to work his way up through the leadership ranks and bring the local union into the left-leaning District 65. Mazzocchi was hired in May 1950, and through this effort, Mazzocchi got his start as a union organizer.

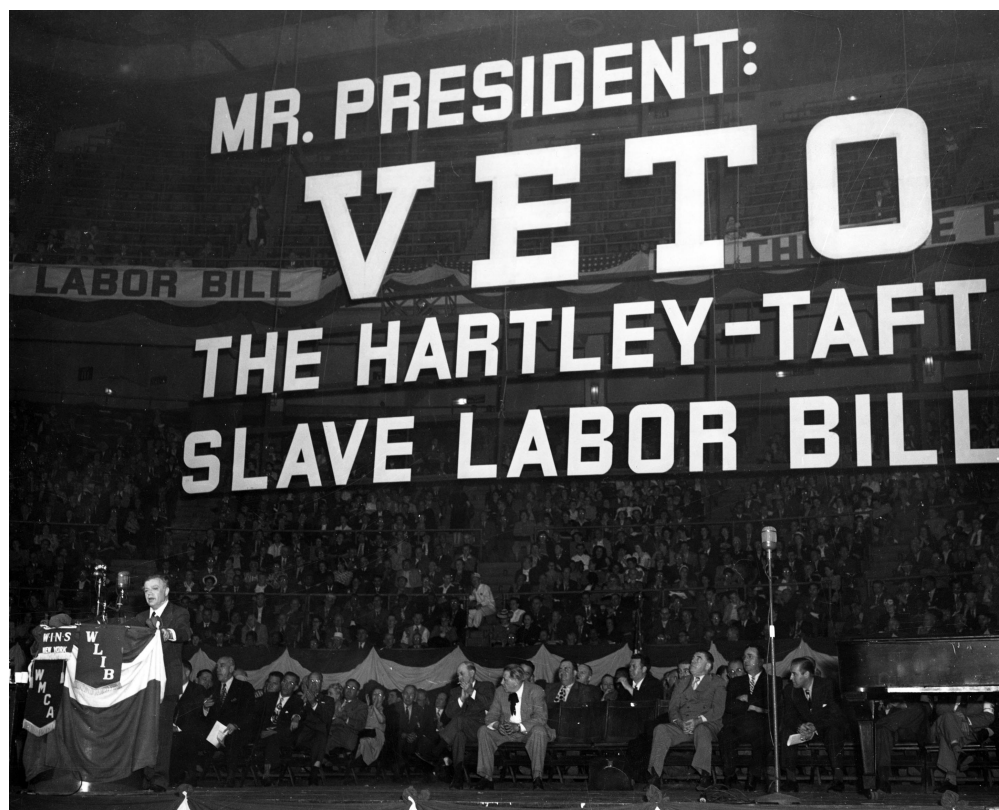


Figure 5: David Dubinsky of the International Ladies Garment Workers Union (ILGWU) gives a speech against the Hartley-Taft bill, with Luigi Antonini in the audience, May 4, 1947.  
(Source: Investopedia.com)

These years preceded the formation of the Oil Chemical and Atomic Workers

(OCAW). It wouldn't be until March 4, 1955, when the United Gas, Coke, and Chemical Workers of America (UGCCWA) merged with the Oil Workers International Union (OWIU) to form the OCAW (OCAW 1960:48). This was also the year when the AFL and CIO merged, forming the present-day American Federation of Labor-Congress of Industrial Organizations (AFL-CIO).

***The Oil Workers International Union.*** The Oil workers' first breakthrough in terms of organizing occurred during World War I in Texas and California. The Congress of Industrial Organizations (CIO) had not yet formed, so a charter in the American Federation of Labor (AFL) was granted to several local unions; once several of these locals were chartered, they successfully petitioned the AFL for a charter as the Oil Field, Gas Well and Refinery Workers of America in 1918 (OCAW 1960:48). After some initial success, the union's membership declined to only 350 by 1933 because of union busting, but the passage of the National Labor Relations Act (NLRA) in 1935 gave the union a new set of rights and tools to organize, again giving the union a boost (OCAW 1960:49). That same year, the president of the union worked with other labor leaders to establish the Committee for Industrial Organizations, though they remained within the AFL; but this did not last long, and two years later, the Committee broke with the AFL to form its own union federation (OCAW 1960:49). During the same period, the union's internal democracy improved considerably with the creation of the rank-and-file International Executive Council, and the convention no longer elected officers; instead, they were elected by direct referendum (OCAW 1960:49–50).

***Gas, Coke, and Chemical Workers.*** The Gas, Coke, and Chemical Workers Union started in the United Mine Workers of America (UMWA). The UMWA wanted to unite workers in industries that processed or used petroleum coke in the production of



artificial gas (OCAW 1960:50). The UMWA was in the AFL at the time, and the Federation was resistant to their organizing efforts. After the UMWA left the AFL, it formed District 50, which was focused on organizing the “gas, coke, and allied products” industries (OCAW 1960:50–51). However, soon John L. Lewis, who was president of the UMWA at the time, split with the CIO, pulling the Mine Workers out of the CIO. This did not sit well with the Gas-Coke Workers within District 50; they had developed loyalty to the CIO and were now merely a division within the now independent District 50 (OCAW 1960:51). Because of this, the various local unions of Gas and Coke Workers sought their own national union, and in 1942, they were granted a charter from the CIO as the United Gas, Coke and Chemical Workers of America (OCAW 1960:51). No longer a part of the independent District 50, they were now back in the CIO. But by 1955, they decided to merge with the Oil Workers to form the Oil, Chemical and Atomic Workers Union (OCAW).

In the years before Tony Mazzocchi entered the union, anti-communism was in full force. The Gas-Coke UGCCWA local union Mazzocchi had joined had a close affiliation with the Communist Party. Several prominent leftist union leaders, such as Fred Hamilton and Charles Doyle, were key to the union’s strength and survival. Not only had several leftist leaders organized the Rubinstein plant in which Mazzocchi worked, but the founding convention of United Gas and Coke Workers UGCCWA was held near Doyle’s home area of Niagara Falls (Leopold 2007:81). Unlike many of the craft unions of the time, which were practically all white and male, Gas-Coke UGCCWA was forthright in its opposition to discrimination. They were early adopters of anti-racist policies and practices. They passed resolutions condemning racist discrimination at their founding convention and urged for the promotion of more women in union leadership. Suffice it to say that despite the reactionary

tide, the union managed to forge a genuinely progressive agenda, especially in light of the context in which they were operating.

Anti-communism, by and large, had not infiltrated the union's rank and file either. For example, in 1946, the union voted to "provide financial support for the CP-dominated United Electrical Workers during its difficult Phelps-Dodge strike" (Leopold 2007:84). Notwithstanding the strong CP presence within the union, it still counted many anti-communists among its ranks, though they managed to work together relatively peacefully until 1946 (Leopold 2007:84). It was at that time that the anti-communists began plotting to take over the union and push the communists out. They eventually purged Charles Doyle from the union by holding a convention in Canada. Doyle did not have legal immigration status in the United States, so anti-communists alerted the INS so that when Doyle tried to reenter the US, he would be denied. This effectively ended his OCAW tenure. Jack Curran, an anti-communist, rose to power within the OCAW.

Mazzocchi had connections with the CP through family and relatives, though Mazzocchi himself was not a member of the party. He was, however, politically active and looking for a job. At the same time, the purged communists were looking for revenge and to take back the union from Curran and the anti-communists. Mazzocchi got his start in the union as part of this effort. By moderating the politics of the union, Curran had been ineffective at warding off the "power grabs" by management. Furthermore, the chief steward had allowed grievances to pile up unaddressed (Leopold 2007:90). This presented an opportunity for Mazzocchi to step in and slowly organize to win workers over to his vision of what the union ought to be. He started by agitating around the inadequate handling of grievances at the Rubinstein plant where he worked and eventually ousted the conservative steward at the

plant. Slowly, he worked through the ranks of union leadership, getting elected to the local committee at the Gas-Coke District Council and speaking up about issues at union meetings (Leopold 2007:97–98).

Over the years, the union maintained itself as a progressive voice within the labor movement. Despite having so many members in industries that work with environmentally hazardous chemicals, the union developed a plan for what it called a Just Transition: an effort to advance a politics that both protected the environment from hazardous chemicals and emissions and the workers who would be affected the most by transitions away from those processes and usage of those chemicals. Indeed, in the 1990s, the union spearheaded the effort to build the US Labor Party, a party independent of the Democrats and Republicans anchored in the trade unions. It also was instrumental in the creation of the U.S. Chemical Safety and Hazard Investigation Board (CSB) after the explosion at the Phillips Chemical Plant in Pasadena, Texas, killed 23 workers.<sup>16</sup> The OCAW was heavily supported and pushed for the passage of the Occupational Safety and Health Act, which created a federal agency to enforce occupational safety laws. The union was also a driving force in the passage of the Environmental Protection Agency (Leopold 2007).

Though the union maintained a progressive voice within the labor movement throughout the period, it continued to shed members throughout the 1980s and 1990s, largely due to the offshoring of production, automation, and deindustrialization. For example, plants that used to require 10,000 workers to operate now can be run with as few as 600 or 700 (Dudzic 2024). Ironically, many of the stringent occupational and environmental health and safety laws that the union advocated for also made production more expensive in the US and

---

<sup>16</sup>Author correspondence with Mark Dudzic (2024).

possibly contributed to the union's decline in membership via offshoring and globalization. According to Mark Dudzic, a former OCAW official, one employer was quite open about what drove their decision to move production outside the US. Over the years, the union had fought to improve safety at one of the plants where they had members. Approximately 120 workers at the plant were frequently exposed to very hazardous chemicals; the union finally convinced the employer to build a wastewater treatment plant and install enclosed production booths to mitigate the hazards. However, the company eventually decided to move production to India because of the costs. The union tried to negotiate with them to no avail. The company had a \$10 million annual wage bill and environmental compliance costs of \$15 million per year. In India, environmental compliance costs were close to zero and wages much lower (Dudzic 2024). According to Dudzic, the company told the union:

Our wage bill is \$10 million a year. Our environmental compliance is \$15 million a year. It's close to zero in India. So you could offer to work for free, and it still wouldn't be competitive with what we can do in India because of the environmental compliance. So, basically, they were offshoring not only our work but their ability to contaminate workers and communities. This plant had one of the highest rates of bladder cancer in the United States before we started organizing these protections, and I'm sure the rates of bladder cancer wherever they moved in India went up because of this company. (2024)

In 1999, to "stop the bleeding," the OCAW merged with the Paper, Allied-Industrial, Chemical, and Energy Workers International Union (PACE; Figure 6). Dudzic described this merger as disastrous:

The [Paper Workers (UPIU) had] the opposite tradition in terms of internal governance. It was very top-down and very closed; officers basically ran the show. They had these district directors who manipulated politics in the various districts, so it was very opposite of the OCAW. Some people in our Union felt that we could shake things up; they promised to allow for some more democratic structures in the new Union, but they quickly closed the doors on that after the merger. The hope was that the paper workers were...the structures of the industries were very similar, these large

manufacturing facilities dominated by multinational corporations; the Paper Workers, like the Oil and Chemical workers OCAW, had a lot of people in the South and rural areas. There was some sense that there could be some synergy there, but the leadership was backward, incompetent, and intent from the very beginning on purging any kind of militancy and progressive politics from the Union. (2024)

The merger also threatened the Just Transition framework that the OCAW had pioneered:

[The UPIU] didn't like it [Just Transition]. We had this big fight about chlorine, which is a key ingredient in the paper-making process, but there [are] other technological ways to make paper without using chlorine. And we, the Oil, Chemical Atomic Workers (OCAW), had called for a ban on chlorine. The Paper Workers sided with the industry and opposed that ban; that was one of the first fights we had after the merger, and we lost. That was sort of the defeat of the worker-centered, just transition model as opposed to an industry-supportive, "keep pumping the poisons out as long as you can" model. (2024)

However, the merger was short-lived. In 2005, PACE was absorbed into the United Steelworkers (USW). Though the merger with the USW was also conducted in a top-down fashion (Dudzic 2024), it had the effect of stabilizing the union, which had remained in a precarious position after the previous merger. The two mergers have effectively wiped out many of the earlier OCAW democratic rank-and-file decision-making processes and replaced them with more bureaucratic methods. For example, much of the negotiating activity is now carried out by "technicians," who closely study the economic trends in lieu of talking directly with the workers and "work[ing] from the bottom-up on... bargaining" (Dudzic 2024). At the same time, the OCAW culture around health and safety has survived. According to Dudzic, the USW had "always [been] a partner with the OCAW, from the days going back to the passage of the OSH Act in 1970" (Dudzic 2024). The USW's Health and Safety Department is also named after Tony Mazzocchi. It is called the Tony Mazzocchi Center for Labor and Environmental Health.

This persists even in 2023. To wit, the Carson, California USW Local 675 has been

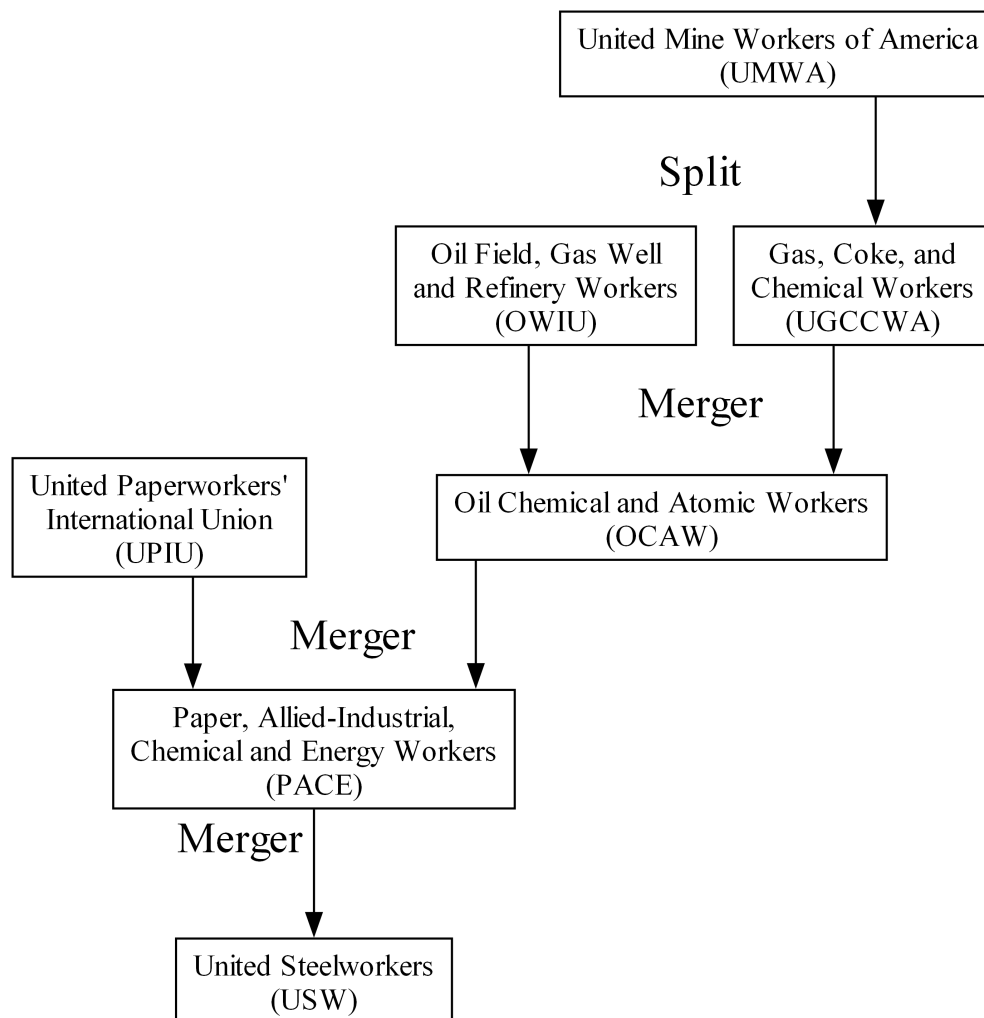


Figure 6: Oil, Chemical and Atomic Workers Union (OCAW) was the product of a merger between the OWIU and United Gas, Coke, and Chemical Workers of America (UGCCWA). It merged with the United Paperworkers' International Union (UPIU) in 1999 to form PACE. The OCAW is now part of the United Steelworkers (USW)

supportive of several environmental initiatives and efforts. The Local, which is important to note, is an oil local, commissioned the Pollin Report released in 2021 (Pollin et al. 2021). The report charts a path away from dirty fuel sources to clean energy. More recently, in 2023, Norman Rogers, vice president of USW Local 675, was quoted in the *Los Angeles Times* as a supporter of a transition from fossil fuel to clean energy jobs (Roth 2023). Several local unions in the area have launched a political coalition to lobby Sacramento to protect workers

while the transition occurs. From that perspective, perhaps the most enduring feature that has survived from the OCAW days is the Just Transition framework.

***Comparison: UA and the OCAW/USW.*** The United Association of Plumbers and Pipefitters (UA) and OCAW/USW clearly organize very differently. The UA along with North America’s Building Trades Unions (NABTU) have been quite industry-friendly and reluctant to challenge the bosses because they rely on labor-management peace to maintain the relationship and keep the voluntary contract in place. This comes down to a highly pragmatic calculation about what the union perceives as areas where it has the upper hand because of skill level or other considerations, such as the employer’s need for a large workforce that can quickly be deployed. Though the work can be skilled, as is the case with petrochemical work, the approach can still become conservative even in relation to those employers because of the ever-decreasing scope of *highly skilled* work in general. That is, construction union leaders and members have taken a rearguard approach in the context of a limited pool of opportunities. Take the push for “clean energy” as an example. The Building Trades have been less than supportive of ending fossil fuel consumption and replacing it with renewables. Renewable energy companies have been notoriously anti-union, and unions have had little success in organizing workers in those companies (Scheiber 2021). The unions see little else in the way of energy work and, thus, are not likely to challenge the industry.

The OCAW is less burdened by the need to maintain friendly labor-management relations because it does not depend on voluntary contracts. Since labor-management peace is not necessary to keep the relationship in place, the OCAW challenges management more frequently and is more willing (and able) to take risks and align politically with other unions and progressive movements.

*The International Association of Machinists (IAM)*

The International Association of Machinists and Aerospace Workers (IAM) and UA are both craft unions. Both were American Federation of Labor (AFL) unions before the AFL and CIO merged in 1955. Although perhaps not anchored as steadfastly to the expansion of social-wage policy and decommodified public goods as unions such as the National Nurses United and National Health Care Workers or even the Brotherhood of Maintenance of Way Employees, they have nonetheless given their official support toward the effort to establish single-payer healthcare in the United States, a policy that would eliminate private insurers and establish government-funded healthcare insurance that would cover all, regardless of one's income or finances. This arguably is along the more "radical" edge of the US trade union movement, such as it is. What could explain this different outcome? Both the IAM and the building trades unions were early AFL craft unions. They both have a history of racist, exclusionary policies. A key difference, however, is that the IAM is not a construction union and thus cannot enter into voluntary "pre-hire" agreements; they cannot "organize the bosses."

Boeing workers in Washington's Puget Sound area formed IAM District Lodge 751 in 1935. This places the formation of the union directly in the context of the years in which the fledgling CIO was organizing workers in the rapidly expanding industries of the time. The CIO's organizing tactics were influenced by the Industrial Workers of the World (IWW), a radical union that pushed for the replacement of wage labor and the private ownership of industry with industrial democracy, where workers would collectively own the means of production and collectively make decisions about how the workplace should be run



(Industrial Workers of the World 2024). Though the IWW remained politically marginal, their tactics and philosophy undoubtedly had an impact on the CIO in the 1920s and 1930s (McCann 1989:2-6). The AFL, committed to craft unionism, was unable to organize the new industrial workers because of disputes that would arise regarding which craft union the newly organized industrial workers should join. When the AFL did organize industrial workers, they would first organize them into industrial-like union structures called “federal” unions. Eventually, these unions were supposed to dissolve, with the workers reassigned to the appropriate craft union. However, many of the newly organized industrial workers were not attracted to the craft union idea, as evidenced by their continuing attendance at the “Federal” (i.e., industrial) union that they were initially organized into and their failure to attend the union meeting for their particular craft (McCann 1989:8).

In the 1930s, when the Boeing shop first unionized, the CIO was primarily focused on the auto industry. As a result, there was not much emphasis from the CIO on organizing in the aerospace industry at that time. The workers experienced terrible conditions at work, and there had been talk about forming a union. Boeing had considered forming a company union, a union that is controlled by the employer and is not a truly independent labor organization, which was a popular tactic for many companies at the time. But with the passage of the NLRA, company unions became illegal, and Boeing recognized that, despite the pending legal challenges against the NLRA, the prospect of successfully forming a company union seemed unlikely; indeed, shortly after the company announced its intent to create a company union, the District Lodge filed a NLRB complaint, and Boeing retracted its plan (McCann 1989:23-24). Furthermore, the CIO was on the rise, and they were mounting militant challenges to employers in the auto industry. Boeing thought that it would only be

a matter of time before the growing labor federation turned its sights on Boeing. District Lodge 751, by contrast, was rather small, with only 35 members, and was not anchored in radical unionism à la the IWW or CIO. (McCann 1989:24). Within this context, it made quite a lot of sense for Boeing to choose what it saw as a lesser evil. So, it chose to recognize District Lodge 751 as the workers' union.

The initial years of bargaining were generally amicable. Boeing agreed to all of 751's "no-cost" demands, so long as 751 was willing to forgo any wage increases or other items that would directly increase Boeing's labor costs and alarm their creditors (McCann 1989:96–97). But the friendly relations between District Lodge 751 and Boeing were short-lived. During the war years, the company grew, and along with it came the professionalization of negotiations within Boeing. After the death of Boeing President Phil Johnson in 1945, with whom the union had such great relations that they commemorated him in the union magazine as "a great guy," the new Boeing President, William M. Allen, dispensed with the friendly relations and began to target the seniority system in an effort to allow for complete freedom of transfer rights within the plant (McCann 1989:98–99). Allen immediately began layoffs at the plant, and seniority-related rehiring procedures became contentious as the company rehired supervisors first, irrespective of seniority (McCann 1989:100).

The union fought Boeing's violation of the contract and prevailed in arbitration, but Boeing now had its sights set on eliminating the seniority provisions altogether. In 1947, negotiations stalled as Boeing insisted on provisions that "would have effectively negated the seniority protections gained by the Union. . ." (McCann 1989:101). Negotiations stalled, and the union called a strike, but they were hobbled by the no-strike clause in their agreement and its indefinite duration; because of this, the International refused to sanction the strike

(McCann 1989:105–6). In spite of this, the union ultimately struck and lost; in the end, they returned to work without any union contract at all (McCann 1989:107–8). Most significantly, amicable relations between 751 and Boeing were over.

Not only had District Lodge 751 lost the strike, but since they had a no-strike clause in their contract, the strike was deemed illegal by the courts, and the union lost its designation as the collective bargaining agent at Boeing. To make matters worse, the Teamsters Union, aided by the American Federation of Labor (AFL) and the local building trades unions, was trying to raid the shop, meaning the Teamsters sought to gain control as the sole union at Boeing (McCann 1989:131–39). A new NLRB election was held, and ultimately, 751 won and regained its position as the Boeing workers’ union (McCann 1989:139). However, it was now in a much weaker position as the union security clause<sup>17</sup> and seniority provisions were now a thing of the past.

Since then, District Lodge 751 has had to fight to regain (and retain) any of the provisions that it had during World War II. Negotiations in 1962 nearly led to another strike when Boeing again demanded major concessions from the union, and in 1965, the union struck to eliminate the “Performance Analysis System” that Boeing had unilaterally instituted after the defeat of the seniority system in 1948 (McCann 1989:174). Since then, the union has had to expand its organizing to include more than just Boeing employees. The union recognized the importance of such organizing efforts as the production process has become more fragmented and outsourced, and not all parts are produced in-house now (McCann 1989:178–83). From that perspective, organizing by craft the way that the building

---

<sup>17</sup>A union security clause is a clause in a collective bargaining agreement (CBA) between an employer, a union, and a bargaining unit that requires employees to join the union as a condition of employment.

trades does is not a viable option. As a result, the union has had to continue to pursue more industrial-style organizing, which is an inherently more conflictual strategy despite being a craft union.

However, that does not mean that the IAM has completely abandoned its craft union roots. Elsewhere on the West Coast, the IAM is still involved in “union turf wars” that are characteristic of craft unions. For example, the IAM and International Longshore and Warehouse Union (ILWU) have battled over jurisdiction at West Coast ports in the past decade, with the IAM contending that only the skilled craftworkers in the Machinists are qualified to perform the diagnostic and maintenance work at the port, while the ILWU, which has traditionally been an industrial or “wall-to-wall union,” insists on its jurisdiction over all workers at the ports irrespective of their title or job classification (Mongelluzzo 2014). As the ports modernize, they are expected to bring in automated stacking cranes that are “computerized and highly technical” (Mongelluzzo 2014). Don Crosatto, IAM senior area director, argues that “You can’t just hand a longshoreman a wrench and expect him to be a mechanic” and that only trained craftworkers who have completed an apprenticeship are equipped to do the demanding, technical work; “We are a craft union. We’re not embarrassed by that,” he added (Mongelluzzo 2014).

Notwithstanding the craft union orientation of the International Association of Machinists and Aerospace Workers (IAM), the union has taken the bold step of endorsing single-payer healthcare. They have affiliated with the Labor Campaign for Single Payer (LCSP) and made an official commitment by passing a resolution at the union’s 2004 convention (Unions for Single Payer Health Care n.d.). No construction unions are affiliated<sup>18</sup> with the

---

<sup>18</sup>Affiliate is a higher standard than merely expressing support. It requires the union to pass an official

LCSP, and none that this author is aware of have passed official resolutions expressing support for the same, though there have been sporadic expressions of support for single-payer from the International Brotherhood of Electrical Workers<sup>19</sup> and the International Union of Painters and Allied Trades (Unions for Single Payer Health Care n.d.). So while the IAM has not shed its craft union roots entirely, it embraces a more class struggle-based unionism by endorsing policies that would benefit not just its members but the working class more generally.

## 9. COMPARISONS BETWEEN BUILDING TRADES UNIONS

While the Building Trades largely “organizes the bosses”<sup>20</sup> rather than the workers already employed, there is still some variation in how they organize. Some construction unions file representation cases—meaning they follow the “industrial” organizing path rather than the construction path (Figure 2). Representation cases are filed when a group of workers or the union believes that a majority of the workers want the union to be officially recognized at their workplace. If successful, the employer has a legal obligation to negotiate with the union. These cases represent a departure from the usual approach that most building trades unions take. I expected construction unions that use the more typical organizing technique associated with the industrial unions in the 1930s<sup>21</sup> – i.e., they organize workers in the workplace from the “bottom-up” – would also take more progressive stances on other issues, be more likely to work with other unions on shared issues or concerns, and in general be less

---

resolution and a commitment to a single-payer healthcare worker education program.

<sup>19</sup>Author correspondence with Mark Dudzic (LCSP).

<sup>20</sup>A wonderfully apt description that I owe to Mark Dudzic, former OCAW official and long-time Labor Campaign for Single Payer (LCSP) organizer.

<sup>21</sup>Many of the unions that use this method are not “industrial” in the way that the term was initially used in the 1920s and 1930s to denote manufacturing plant employment, such as automobile production lines, but the important point is that the “organize the workers” method that the NLRB elections were established to accommodate is being used.

parochial and take a more expansive view of being pro-worker (e.g., endorse social wage policy such as single-payer healthcare that would benefit more than just their members). The logic behind this expectation is that those construction unions who are using the “industrial” organizing technique are using tactics that are inherently more confrontational and thus could be more likely to see other progressive or left-wing organizations and unions as allies.

However, the interviews revealed that those construction unions who filed representation cases largely did *not* embrace more progressive or left-wing politics. They usually used the technique for pragmatic reasons. For example, some workplaces were comprised of more permanent staff members who were not construction workers, and thus, the “industrial” technique was more appropriate anyway. By and large, these organizing undertakings did not lead the union to embrace more militant or progressive views.

### ***Millwrights***

A Millwright’s local union in the Midwest organized workers at an agricultural plant after the workers reached out because they were not being treated with respect, were often asked to work outside their classification without additional pay, and promises from management were continually broken. Since the workers were working permanently at a plant doing maintenance, they were technically not construction workers, and the union organized them the “industrial” way using an NLRB election. The Millwrights Union was successful (they won the election). They organized alongside the International Brotherhood of Electrical Workers, who also successfully conducted an NLRB election, and now both unions are trying to negotiate a contract with the employer.

The local union appeared to have limited involvement with other labor, community, or political organizations or campaigns. The organizer said that the local union was not

involved in the local or county labor council,<sup>22</sup> but they were involved in the local building trades council, which is similar to the county labor federation but strictly for the building trades unions. In short, their inter-union collaboration seemed not to extend much beyond the building trades. Similarly, the local union largely took an apolitical perspective in terms of endorsements. The local union does not endorse any political candidates. Taken together, this suggests that there is not an association between more radical or progressive political activity and these organizing efforts. However, this was the first organizing drive like this that the union had undertaken, and the organizer was quite excited about the possibility of more organizing drives like this one. So it remains to be seen what might happen to the union's political culture if they continue to take on organizing drives like these that respond directly to worker grievances.<sup>23</sup>

### *Electricians (IBEW)*

The IBEW local union experienced a similar situation when a group of upset workers reached out to the union for help. Workers at a telecommunications company were upset with the changes after the company was purchased and restructured. In particular, they were unhappy with the way that the company was treating them and the lack of respect from management. Because the local union also represents a number of utility and municipal workers in the city and, according to the organizer, had developed a reputation as a strong union, many union staff already knew the workers in the community. The union successfully won the NLRB election, but in a tragic turn of events, the company decided to lay off all

---

<sup>22</sup>It may be that the local union *is* involved in the county labor council, but the organizer was unaware of the involvement. Most local unions at least have some affiliation with their regional or county-level labor council. Nevertheless, it seems safe to say that involvement in the county labor council is limited, at best.

<sup>23</sup>It also could be that there is no relationship between these sorts organizing drives and the union's political culture, but the main point is that the local union could change politically as they undertake more "industrial-style" organizing.

its installers and replace them with subcontractors. The union is now trying to negotiate a layoff package instead of a first contract.

That so many in the local community already knew the union and its importance to workers—i.e., it had built a good reputation—suggests that the union could be somewhat broader in its orientation (i.e., not narrowly focused on its members to the exclusion of broader issues). However, this seems not to be the case. The local union seems to be no different from the building trades unions in general in terms of its political culture. They still tend to take a rather careful approach of trying to win employers over versus more militant strategies (e.g., organizing for a strike), although they did indicate that they were involved in the county labor council and the building trades council (multi-union federations), which suggests that there is at least nominally some inter-union solidarity.

***Project labor agreements.*** One area in which the IBEW local was quite politically active in the community is in urging local government to adopt project labor agreements. A Project Labor Agreement (PLA) is a “. . . pre-hire collective bargaining agreement with one or more labor organizations that establishes the terms and conditions of employment for a specific construction project. . .” (Obama 2009). The projects that a PLA covers are usually publicly funded. Construction unions are attracted to PLAs because once they are enacted by the government (often at the local level), they are binding on all contractors who decide to bid on a project for a particular institution (e.g., a school district) or a particular project (e.g., a new library; Kotler 2009; Johnston-Dodds and Burton 2001). This forces employers who would otherwise not hire union workers to hire from the union’s hiring hall and thus be bound by the union’s contract for the duration of the project. With this technique, the union can capture part of the construction market that it otherwise would not be able to



with the usual construction organizing method of “organizing the bosses.”

At the same time, the adoption of these agreements is usually conditional on the incorporation of language promoting “labor peace.” For example, the federal government requires PLAs to “contain guarantees against strikes, lockouts, and similar job disruptions” (Obama 2009). These conditions are often more restrictive and onerous than the no-strike clauses typically contained in most collective bargaining agreements (CBAs) with respect to what sorts of collective or concerted activity a union is forbidden from engaging in. Many CBAs contain a simple, straightforward “no strike/no lockout” clause that legally prevents both the union from striking and the employer from refusing to let the employees work for the duration of the contract.<sup>24</sup> But PLAs typically contain language that, in addition to the standard no-strike language, also prohibits less aggressive tactics, such as hand-billing<sup>25</sup> or even “advising the public that a labor dispute exists” (Antioch Unified School District 2013:7). For example, the Antioch Unified School District’s PLA<sup>26</sup> for construction projects at Antioch High School requires that:

There shall be no strikes, sympathy strikes, work stoppages, picketing, hand-billing or otherwise advising the public that a labor dispute exists, or slowdowns of any kind, for any reason, by the Unions or employees employed on any Project included within the scope of the applicable Projects, at the job site of any such Project or at any other facility of the District because of a dispute on a Project. Any such disputes are to be addressed through the dispute resolution process as set forth herein and in applicable law. (Antioch Unified School District 2013:7)

By contrast, UA Local 393’s standard CBA is much less onerous and even allows for the

---

<sup>24</sup>Trade unionists with more radical leanings have critiqued the widespread acceptance of no-strike clauses within the labor movement, arguing that these clauses have significantly reduced labor militancy. See Burns (2011:Ch. 3) for a detailed critique of no-strike clauses.

<sup>25</sup>Distributing fliers or leaflets advising the public of a labor dispute or political action.

<sup>26</sup>I was unable to locate an agreement that the IBEW local in Alaska specifically has agreed to, but the others that I have found were consistently more stringent than collective bargaining agreements (CBAs). Moreover, parties to these agreements, especially the government, understand the centrality of “labor peace” to these agreements, so it is fair to make some generalizations based on the contracts that I did find.

union to observe sympathy strikes (refuse to work when other unions are on strike):

The parties hereto agree that while this Agreement is in effect, and while the other party hereto complies herewith, there shall be no strike, lockout or other work stoppage, except that it is understood that a stoppage of work because of any lawful primary picket line or one sanctioned by the Santa Clara-San Benito County Building Trades Council, shall not be a violation of this Agreement; and no employees shall be discharged, disciplined, suspended or laid off for honoring or refusing to work behind such picket line. (UA Local Union 393 et al. 2018–2021:50)

From that perspective, PLAs have both class antagonist and class collaborationist elements. They are class antagonist in that they move the construction union away from the standard construction method of “organizing the bosses” to more coercive tactics. PLAs are inherently coercive in one sense because they force the employer to hire union construction workers regardless of whether the employer wants to. But they can often be class collaborationist<sup>27</sup> because of how closely the project labor agreement is tied to “labor peace.”

In sum, the IBEW local’s emphasis on PLAs does not represent much of a departure from what most building trades unions are doing. Pushing for PLAs is a common strategy that construction unions use in many parts of the United States. In that sense, it can *not* be said that this local is more radical or class struggle-oriented because of their emphasis on PLAs.

***National politics.*** On the national level, the local supports some important legislative efforts and is vigilant when it comes to fighting right-to-work legislation. They also support the initiatives that the national labor federation (AFL-CIO) supports, including the Protecting the Right to Organize Act (PRO Act):

At the national level, there had been a pretty large effort to pass what’s known as the PRO Act or the Protecting the Right to Organize Act, and that was at the national

---

<sup>27</sup>Although they are not *inherently* class collaborationist in that the union and the government could agree to a project labor agreement that does not contain a no-strike clause.

level. It hasn't been passed yet, but that was one in recent history... Of course, if there's ever an initiative to expand right-to-work legislation, we would certainly be opposed to that. I don't know that there has been a push either locally or nationally for that recently, but it's always on our radar as well. (Interview with IBEW union organizer)

However, this also does not represent much of a difference from what other building trades unions support. That notwithstanding, the IBEW local *does* seem to be more politically active than the Millwrights' local.

### ***Cement Masons and Plasterers (OPCIMA)***

An Operative Plasterers' and Cement Masons' International Association (OPCIMA) local union organized excavation workers who had been working for a company that was not signed to a full agreement; the company was signed to a seasonal agreement. Because the agreement was seasonal, the workers were unsure if they would still have a job each spring. The workers were already union members, and they wanted the employer to sign a full agreement. However, the excavation company opposed the effort. Because of this, the union pursued an NLRB election to force the employer to accept the union, *fait accompli*. The union prevailed. The organizer explained that because most of these workers were already union members, this was an "easy case." The union mostly just had to maintain lines of communication to win the election. However, the union has still not reached a first contract; negotiations are ongoing. The union organizer suggested that, according to the union's lawyer, the company may already be bound to the union agreement because they have continued to employ the workers and pay into the union's Taft-Hartley trust fund.<sup>28</sup> Still, the case is ongoing, and it remains to be seen what will happen.

---

<sup>28</sup>Rather than the employer providing benefits, construction unions operate a trust fund to administer health and welfare benefits for their members.

The organizer has been involved with many similar organizing efforts that followed the “industrial” path. Many of them had been more contentious than this one. Yet, the union is still very cautious with how it handles workplace issues. For example, the way that the union handles workplace disputes is particularly cautious; the organizer explained that filing grievances was “bad business”:

Every grievance or job site issue is handled completely differently [based on the context]. It really depends on the grievance or the issue. We, as a local, don’t like grievances, and we don’t like job site issues, and we don’t like to file grievances ever. That’s not our forte. It’s kind of bad business. But at the same time, if push comes to shove, and you have to file a grievance, usually, we do everything in our power to communicate. So, we’re going to give the contractor the benefit of the doubt and do as much communication as we can... I’m currently in a grievance right now, but it’s also [a situation where] the grievance itself isn’t egregious. The grievance is just a placeholder to ensure that the member who’s being aggrieved is protected. [It] gives us the opportunity to work with the contractor to hash out whatever issues or grievances are at hand. It gives us just legal teeth to... hold them in compliance to protect our membership. (Interview with OPCIMA organizer)

The political activity of the union was largely limited to community service-related work, though the organizer did indicate that the union also participates in local job fairs to recruit people into the trade:

[W]e’re constantly doing outreach. We work with school districts and cities, and we work with the jail and the Department of Corrections. We work hand in hand with pretty much all the big players in the industry. We go to new job fairs and crap, or we’ll do Habitat for Humanity and donate free labor. Or we collaborate on a macro level, whether it be organizing campaigns or communities in need; we’ll do what we can to help out with financial needs, materials, or labor. We [also participate in] Toys for Tots... (Interview with OPCIMA organizer)

Like the IBEW local, the more overtly political activity centered around advocating for local government to enact Project Labor Agreements (PLAs). The organizer emphasized that these agreements offer a pathway into well-paying, unionized construction jobs for many because, in addition to requiring the employer to pay union wages and into union benefit trust

funds, they also incentivize apprenticeship utilization, which creates more opportunities for members in the community. He also explained that the PLAs did not exclude any contractors from the bidding process and could actually be used to create new opportunities for minority contractors while ensuring quality control for the owner group. Through this process, the union can expose the non-union contractors to what the union has to offer and attempt to get the non-union contractors to become signatories.

As with the IBEW, the PLA process contains some coercive elements. It aims to compel contractors paying below area-standard wages to hire union workers. This policy helps maintain a “floor” for wages and benefits, preventing non-union employers from underbidding union employers, who are required to pay higher wages and contribute to superior benefits packages. However, the process is also heavily rooted in class collaboration and class peace. While the union’s PLAs can create new opportunities for workers entering the construction industry, they are ultimately used by this local to persuade employers to join the union by highlighting benefits for employers as well. Significantly, this underscores the consequences of a voluntary contractual relationship on union strategy; even strategies that are at first blush coercive are ultimately integrated into a class-conciliatory strategy.

## 10. CONCLUSION

The way in which a union organizes is associated with its willingness to challenge management and embrace more progressive political stances. The differences in political stances and policy preferences between the United Steelworkers (USW) and the United Association of Plumbers and Pipefitters (UA) offer a clear illustration of this. While the UA and other building trades unions embrace nearly any construction project, so long as its members remain employed, the USW has taken an approach that conceives of working-class

interests as extending beyond the job site and into the community. The USW has been at the forefront of efforts to fight pollution and global warming while also maintaining that workers most impacted by a transition from fossil fuels to clean energy (which includes many of their workers) should not be pushed into low-wage employment. Thus, they reject the false dilemma of “jobs vs. climate.”

Similarly, by affiliating with the Labor Campaign for Single Payer (LCSP), the International Association of Machinists and Aerospace Workers (IAM) has aligned with many of the more progressive labor unions in the US despite being a craft union. Labor historians have often depicted craft unions as more parochial and self-interested, often spurning solidarity with other labor organizations and progressive causes. However, the IAM case underscores the inadequacy of this claim. Despite its embrace of many of the characteristics of craft unionism, such as a propensity to engage in jurisdictional disputes with other unions, the IAM has still shown solidarity with broader progressive efforts, such as the effort to establish single-payer healthcare in the US.

Significantly, since they do not have voluntary agreements with employers, the USW and IAM have more leeway to challenge management and take positions that may conflict with their employers’ interests. This is because they rely on conflictual organizing strategies, which concentrate the union’s organizing strength in labor actions such as striking or through the National Labor Relations Board (NLRB), another tool that unions can use to compel recalcitrant employers to negotiate. By contrast, construction unions such as the UA, which enter into voluntary agreements that employers can leave when the contract expires, are in a weaker position. These unions must emphasize class collaboration to avoid upsetting their signatory employers, who might otherwise leave the relationship.

At the same time, construction unions that occasionally use the non-construction organizing technique are not necessarily more oriented to broader solidarities with other progressive movements. Interview findings suggest that construction unions that organize this way typically only do so when it is more appropriate, such as when the workers are maintenance workers or cable technicians and not technically construction workers. This strategy also works well (and may have been legally required, since the workers are not engaged in construction work!) because of the permanence of the workforce. Simply put, there is not much of a connection between sporadic industrial-style organizing in construction unions and the adoption of a broader, more progressive political agenda. This may be because these unions do not engage in this industrial organizing technique enough to impact their politics and that the overwhelming majority of workers in these unions were not organized through the industrial organizing method.<sup>29</sup>

This paper primarily focuses on the public political stances taken by unions. However, future research could explore the connections between union organizing methods and the degree of control that unions and their members have over workplace conditions. Additionally, it would be valuable to examine how effectively unions defend contract terms once they are established. This type of research may take longer to complete due to the challenges of accessing workplace and union data, but it would shed light on an underexplored aspect of union dynamics. Furthermore, social network analyses could be used to investigate the dynamics within hiring halls and how favoritism and discrimination against union activists, people of color, and women might perpetuate a conservative and narrow nature in

---

<sup>29</sup>Every organizer whom I spoke with confirmed that only a small number of their members were organized using the industrial organizing method

construction unions. Overall, this area presents significant potential for productive research.



Union	Similarity	Difference	Outcome
Machinists (IAM)	Craft unions	<ul style="list-style-type: none"> <li>• Industrial mode of organizing</li> <li>• Involuntary agreements</li> </ul>	<ul style="list-style-type: none"> <li>• Supports progressive social-wage policy (e.g., single-payer healthcare).</li> </ul>
Plumbers/Pipefitters (UA)		<ul style="list-style-type: none"> <li>• Voluntary agreements</li> </ul>	<ul style="list-style-type: none"> <li>• No/limited support for social-wage policy.</li> </ul>

Table 2: The IAM and UA are similar in that they are both are craft unions, but only the UA is a construction union with voluntary agreements.

Union	Similarity	Difference	Outcome
Oil Chemical & Atomic Workers/Steelworkers (OCAW/USW)	Petrochemical work	<ul style="list-style-type: none"> <li>• Industrial mode of organizing</li> <li>• Involuntary agreements</li> </ul>	<ul style="list-style-type: none"> <li>• Supports progressive social-wage policy.</li> <li>• Supports the Pollan Report (creation of clean -energy jobs) and a transition from fossil fuels.</li> </ul>
Plumbers/Pipefitters (UA)		<ul style="list-style-type: none"> <li>• Voluntary Agreements</li> </ul>	<ul style="list-style-type: none"> <li>• No/limited support for social-wage policy.</li> <li>• Has defended the construction of new oil pipelines.</li> <li>• Opposed reforms and regulatory policies that might hamper new refinery projects</li> </ul>

Table 3: The OCAW/USW and UA are similar in that they both have petrochemical work, but only the UA is a construction union with voluntary agreements.

Characteristic	Non-construction Unions	Construction Unions
<b>Initial Relationship</b>	Involuntary: employers do not seek the union for workers	Voluntary: employers seek the union for their “pool of skilled labor”
<b>Employer Obligations</b>	Employer <u>has an obligation</u> to continue bargaining after the contract expires	Employer <u>has no obligation</u> to continue bargaining after the contract expires
<b>Employment Duration</b>	Ongoing, long-term, or permanent	Usually temporary; project-based
<b>Hiring</b>	Hired directly by the employer	Dispatched by the union to meet the employers’ needs
<b>Organizing Method</b>	Workers organize around their interests irrespective of the employer’s desires	Union convinces employers of the union’s benefit to them
<b>Majority Status<sup>†</sup></b>	Required	<u>Not</u> Required

Table 4: The characteristics of each mode of organizing and contract type.

<sup>†</sup> Whether the majority of the workers must want a union. This requirement makes it necessary to “organize the workers.”

## REFERENCES

- Antioch Unified School District (2013). *Project Labor Agreement for the Antioch Unified School District's Measure B Funded Projects at Antioch High School*. URL: [https://core-docs.s3.amazonaws.com/documents/asset/uploaded\\_file/3816/AUSD/3127950/measure-b-project-labor-agreement.pdf](https://core-docs.s3.amazonaws.com/documents/asset/uploaded_file/3816/AUSD/3127950/measure-b-project-labor-agreement.pdf).
- APALA (Sept. 19, 2016). *AFL-CIO Constituency Groups Stand with Native Americans to Stop the Dakota Access Pipeline*. Asian Pacific American Labor Alliance. URL: <http://www.apalanet.org/2/post/2016/09/afl-cio-constituency-groups-stand-with-native-americans-to-stop-the-dakota-access-pipeline.html>.
- Bilginsoy, Cihan et al. (2023). *Diversity, Equity, and Inclusion Initiatives in the Construction Trades*. Institute for Construction Economic Research (ICERES). URL: <https://nabtu.org/wp-content/uploads/2023/01/ICERES-Study-22Diversity-Equity-and-Inclusion-Initiatives-in-the-Construction-Trades22.pdf>.
- BLS (Jan. 23, 2024). *Union Members Summary - 2023 A01 Results*. US Bureau of Labor Statistics. URL: <https://www.bls.gov/news.release/union2.nr0.htm>.
- Brower Brown, Keith (2023). "Solar Flux: Remaking Landscapes, Labor, and Environmental Politics in California". University of California, Berkeley.
- Brown Plumbing (n.d.). *Executive Summary*. brown3plumbing. URL: <https://www.brown3plumbing.com/executive-summary>.
- Burns, Joe (June 6, 2011). *Reviving the Strike*. IG Publishing.
- California Caught in Debate Over Acceptability of PEX Piping* (Feb. 2, 2004). Plumbing and Mechanical Engineer. URL: <https://www.pengineer.com/articles/84155-california-caught-in-debate-over-acceptability-of-pex-piping>.
- Callahan, James T. et al. (Oct. 3, 2016). *Letter to Obama*. URL: <http://mydo.cx/NjhjMWI5>.
- Christie, Robert A. (1956). "Empire in Wood : A History of the Carpenters' Union / by Robert A. Christie." Ithaca: Cornell University.
- Cobble, Dorothy Sue (Dec. 1, 2013). "Pure and Simple Radicalism: Putting the Progressive Era AFL in Its Time". In: *Labor* 10.4, pp. 61–87. DOI: 10.1215/15476715-2348700. URL: <https://read.dukeupress.edu/labor/article/10/4/61/14540/Pure-and-Simple-Radicalism-Putting-the-Progressive>.
- DOL (n.d.). *WORK Center - Unions 101*. U.S. Department of Labor. URL: <http://www.dol.gov/general/workcenter/unions-101>.
- Dudzic, Mark (Jan. 2, 2024). *Interview*.
- Erlich, Mark and Jeff Grabelsky (Nov. 1, 2005). "Standing at a Crossroads: The Building Trades in the Twenty-First Century". In: *Labor History* 46.4, pp. 421–445. DOI: 10.1080/00236560500266241. URL: <https://doi.org/10.1080/00236560500266241>.

- Faloon, Kelly (Oct. 1, 2002). *California Consumer Groups Support PEX Lawsuit*. Plumbing & Mechanical Magazine. URL: <https://www.pmmag.com/articles/85565-california-consumer-groups-support-pex-lawsuit>.
- Feeley, Dianne (Sept. 14, 2023). “Electric Vehicle Factories Are Overwhelmingly Nonunion. The UAW Strike Could Change That.” In: *Jacobin*. URL: <https://jacobin.com/2023/09/electric-vehicle-nonunion-united-auto-workers-strike-wages>.
- Fitzgerald, David (Mar. 1, 2004). “Beyond ‘Transnationalism’: Mexican Hometown Politics at an American Labour Union”. In: *Ethnic and Racial Studies* 27.2, pp. 228–247. DOI: 10.1080/0141987042000177315. URL: <https://doi.org/10.1080/0141987042000177315>.
- Foner, Philip S (1981). *History of the Labor Movement in the United States. 3: The Policies and Practices of the American Federation of Labor, 1900-1909*. New York: International Publishers.
- (1994). *History of the Labor Movement in the United States. 2: From the Founding of the A. F. of L. to the Emergence of American Imperialism*. New York: Internat. Publ. 357 pp.
- (1996). *History of the Labor Movement in the United States*. New York: International Publishers.
- Grabelsky, Jeff (2007). “Construction or De-Construction?: The Road to Revival in the Building Trades”. In: *New Labor Forum* 16.2, pp. 46–58. JSTOR: 40342931. URL: <https://www.jstor.org/stable/40342931>.
- ILR School (n.d.). *ILR Labor Action Tracker*. Labor Action Tracker. URL: <https://striketracker.ilr.cornell.edu/>.
- Industrial Workers of the World (2024). *About the IWW*. URL: <https://www.iww.org/about/>.
- Investopedia (2024). *Mr. President: Veto the Hartley-Taft Slave Labor Bill*. URL: <https://images.app.goo.gl/oZyrLikSf6XGj6HE8>.
- Isserman, Maurice (1976). “God Bless Our American Institutions: The Labor History of John R. Commons”. In: *Labor History* 17 (Summer), pp. 309–328.
- Jaffe, Louis L. (1940). “Inter-Union Disputes in Search of a Forum”. In: *The Yale Law Journal* 49.3, pp. 424–460. DOI: 10.2307/792665. JSTOR: 792665. URL: <https://www.jstor.org/stable/792665>.
- Johnston-Dodds, Kimberly and John L. Burton (2001). *Constructing California: A Review of Project Labor Agreements*. CRB CRB 01-010. Sacramento, CA: California State Library, California Research Bureau. 94 pp.

- Kazin, Michael (1989). *Barons of Labor: The San Francisco Building Trades and Union Power in the Progressive Era*. The Working Class in American History. Urbana: University of Illinois Press.
- Kotler, Fred B (Mar. 2009). *Project Labor Agreements in New York State: In the Public Interest*. Ithaca, NY: Cornell University, School of Industrial and Labor Relations—Extension Division, Construction Industry Program. URL: <https://web.archive.org/web/20100427215655/digitalcommons.ilr.cornell.edu/cgi/viewcontent.cgi?article=1021&context=reports>.
- Lange, Matthew (2013). *Comparative-Historical Methods*. SAGE Publications Ltd. DOI: 10.4135/9781473914223. URL: <https://methods.sagepub.com/book/comparative-historical-methods>.
- Leopold, Les (2007). *The Man Who Hated Work and Loved Labor*. White River Junction, Vt: Chelsea Green Pub. Company.
- Lescure, Brian (2023). *LinkedIn*. URL: <https://www.linkedin.com/in/brian-lescore-aa15a745/>.
- LJ Kruse (n.d.). *About Us*. URL: <https://ljkruise.com/about-us/>.
- Massie, Victoria M. (Sept. 9, 2016). *To Understand the Dakota Access Pipeline Protests, You Need to Understand Tribal Sovereignty*. Vox. URL: <https://www.vox.com/2016/9/9/12851168/dakota-access-pipeline-protest>.
- McCann, John (1989). *Blood in the Water: A History of District Lodge 751 of the International Association of Machinists and Aerospace Workers*. Olympia, Washington: District Lodge 751, IAM.
- Meyers, Marsha (Sept. 5, 2023). *What Are My Rights as a Public-Sector Worker?* EWOC. URL: <https://workerorganizing.org/public-sector-worker-rights-organizing-collective-bargaining-wall-to-wall-6784/>.
- Moccio, Francine Anne (1992). “Contradicting Male Power and Privilege: Class, Race and Gender Relations in the Building Trades”. PhD thesis. United States – New York: New School for Social Research. 423 pp. ISBN: 979-8-208-53562-2. URL: <https://www.proquest.com/dissertations-theses/contradicting-male-power-privilege-class-race/docview/303992534/se-2?accountid=14512>.
- Mongelluzzo, Bill (Mar. 6, 2014). “Union Turf Wars Expected to Heat Up”. In: *Journal of Commerce*. URL: [https://joc.com/article/union-turf-wars-expected-heat\\_20140306.html](https://joc.com/article/union-turf-wars-expected-heat_20140306.html).
- Murphy, Richard (Jan. 1, 1982). “Pre-Hire Agreements and Section 8(f) of the NLRA: Striking a Proper Balance Between Employee Freedom of Choice and Construction Indus-

- try Stability”. In: *Fordham Law Review* 50.5, p. 1014. URL: <https://ir.lawnet.fordham.edu/flr/vol50/iss5/10>.
- NABTU (Sept. 14, 2016). *Statement on Obama Administration Action to Halt Construction of Dakota Access Pipeline*. NABTU: Building Construction Trade News on Union Construction Industry. URL: <http://web.archive.org/web/20160930005716/http://www.bctd.org/Newsroom/Statement-on-Obama-Administration-Action-to-Halt-C.aspx>.
- NLF (Sept. 30, 2016). *Unions Weigh in on the Dakota Access Pipeline*. New Labor Forum. URL: <https://newlaborforum.cuny.edu/2016/09/30/unions-weigh-in-on-the-dakota-access-pipeline/>.
- NLRB (n.d.). *The NLRB Process*. National Labor Relations Board. URL: <https://www.nlr.gov/resources/nlr-process>.
- O’Connell, Patrick M. (Jan. 4, 2018). “Dakota Access pipeline a mix of angst, potential for those near central Illinois tank farm”. In: *Chicago Tribune*. URL: <https://www.chicagotribune.com/news/breaking/ct-met-patoka-tank-farm-20171220-story.html>.
- Obama, Barack (Feb. 6, 2009). *Executive Order 13502 – Use of Project Labor Agreements for Federal Construction Projects*. whitehouse.gov. URL: <https://obamawhitehouse.archives.gov/the-press-office/executive-order-use-project-labor-agreements-federal-construction-projects>.
- OCAW (1960). *Fact Book / Oil, Chemical and Atomic Workers International Union Affiliated with the AFL-CIO, CLC*. The Union. URL: <https://hdl.handle.net/2027/uc1.10063898258?urlappend=%3Bseq=3>.
- Office of Public Affairs (Sept. 9, 2016). *Joint Statement from the Department of Justice, the Department of the Army and the Department of the Interior Regarding Standing Rock Sioux Tribe v. U.S. Army Corps of Engineers*. United States Department of Justice. URL: <https://www.justice.gov/opa/pr/joint-statement-department-justice-department-army-and-department-interior-regarding-standing>.
- Oh, Wonsun (1989). “Craft versus Industrial Unions: Union Organization within the Workplace”. PhD thesis. United States – Ohio: The Ohio State University. 97 pp. ISBN: 9798207440880. URL: <https://www.proquest.com/docview/303828831/abstract/C5B96AD885BD47B8PQ/1>.
- Paap, Kris (2006). *Working Construction: Why White Working-class Men Put Themselves, and the Labor Movement, in Harm’s Way*. Ithaca (N.Y.): Cornell university press.

- Parker, Mike (Aug. 25, 2008). "Are Industrial Unions Better than Craft? Not Always." In: *Labor Notes*. URL: <https://labornotes.org/2008/08/are-industrial-unions-better-craft-not-always>.
- Parker, Mike and Martha Gruelle (2005). *Democracy Is Power: Rebuilding Unions from the Bottom Up*. Detroit, Mich.: Labor Education and Research Project.
- Perlman, Selig (1922). *History of Trade Unionism in the United States*. New York: MacMillan Company.
- Pollin, Robert et al. (June 10, 2021). *A Program for Economic Recovery and Clean Energy Transition in California*. Department of Economics and Political Economy Research Institute (PERI), University of Massachusetts-Amherst. URL: <https://www.peri.umass.edu/publication/item/1466-a-program-for-economic-recovery-and-clean-energy-transition-in-california>.
- Rogin, Michael (1974). "Comment". In: *Failure of a Dream?: Essays in the History of American Socialism*. Ed. by John H. M. Laslett and Seymour Martin Lipset. Garden City, NY: Anchor Press, pp. 147–156.
- Roth, Sammy (Oct. 24, 2023). "Can Climate Activists and Labor Unions Find Common Ground?" In: *Los Angeles Times. Climate & Environment*. URL: <https://www.latimes.com/environment/newsletter/2023-10-24/boiling-point-can-climate-activists-and-labor-unions-find-common-ground-boiling-point>.
- Saha, Devashree (Sept. 14, 2016). *Five Things to Know about the North Dakota Access Pipeline Debate*. Brookings. URL: <https://www.brookings.edu/articles/five-things-to-know-about-the-north-dakota-access-pipeline-debate/>.
- Saposs, David J. (1935). "Industrial Unionism". In: *Journal of Political Economy* 43.1, pp. 69–83. JSTOR: 1823373. URL: <https://www.jstor.org/stable/1823373>.
- Scheiber, Noam (July 16, 2021). "Building Solar Farms May Not Build the Middle Class". In: *New York Times (Online).business*. URL: <https://www.proquest.com/docview/2551879061/citation/A193EB7EB5074BB7PQ/1>.
- Schneirov, Richard (1993). *Pride and Solidarity: A History of the Plumbers and Pipefitters of Columbus, Ohio, 1889-1989*. Ithaca, N.Y: ILR Press. 189 pp.
- Segal, Martin. (1970). *The Rise of the United Association: National Unionism in the Pipe Trades, 1884-1924*. Wertheim Publications in Industrial Relations. Studies in Labor-Management History. Cambridge: Wertheim Committee, Harvard Univ.; distributed by Harvard Univ. Press.
- Silver, Marc L. (1986). *Under Construction: Work and Alienation in the Building Trades*. SUNY Series in the Sociology of Work. Albany: State University of New York Press. 251 pp.

- Suffern, Arthur E. (May 1, 1936). “Craft vs. Industrial Union”. In: *Current History* 44.2, pp. 97–104. DOI: 10.1525/curh.1936.44.2.97. URL: <https://online.ucpress.edu/currenthistory/article/44/2/97/168237/craft-vs-industrial-union>.
- The Next Infrastructure Challenge* (May 14, 2015). *The Next Infrastructure Challenge: Conversation with Sean McGarvey*. URL: <https://www.youtube.com/watch?v=r891KwockYY>.
- The White House (Dec. 6, 2023). *Readout of Meeting with NABTU Tradeswomen on Opportunities for Women to Secure Good Jobs in Construction Trades*. URL: <https://www.whitehouse.gov/briefing-room/statements-releases/2023/12/06/readout-of-meeting-with-nabtu-tradeswomen-on-opportunities-for-women-to-secure-good-jobs-in-construction-trades/>.
- U.S. Bureau of Labor Statistics (May 3, 2024). “Employment of Women on Nonfarm Payrolls by Industry Sector, Seasonally Adjusted”. In: URL: <https://www.bls.gov/news.release/empsit.t21.htm>.
- UA Local Union 393 et al. (2018–2021). “Master Labor Agreement”. In: URL: [https://ualocal393.org/wp-content/uploads/2021/02/Local-393-MLA\\_2018-2021.pdf](https://ualocal393.org/wp-content/uploads/2021/02/Local-393-MLA_2018-2021.pdf).
- Unions for Single Payer Health Care (n.d.). *Unions for Single Payer Health Care H.R. 676*. Unions for Single Payer Health Care. URL: <http://unionsforsinglepayer.org/>.
- US Army Corps of Engineers (n.d.). *Dakota Access Pipeline*. Dakota Access Pipeline. URL: <https://www.usace.army.mil/Dakota-Access-Pipeline/>.



**ACRONYMS**

AFL	American Federation of Labor. 2, 12, 13, 30, 31, 40, 41, 48, 49, 51
AFL-CIO	American Federation of Labor-Congress of Industrial Organizations. 25, 40, 58
ANGA	America's Natural Gas Alliance. 26
BTC	Building Trades Council. 31
CBA	Collective Bargaining Agreement. 6, 57
CIO	Congress of Industrial Organizations. 38, 40, 41, 48–50
CSB	U.S. Chemical Safety and Hazard Investigation Board. 43
DAPL	Dakota Access Pipeline. 3, 22, 25, 37
EFCA	Employee Free Choice Act. iv
IAM	International Association of Machinists and Aerospace Workers. 2, 10, 11, 29, 48, 52, 53, 62
IBEW	International Brotherhood of Electrical Workers. 11, 53, 55, 56, 59–61
ILGWU	International Ladies Garment Workers Union. 39
ILWU	International Longshore and Warehouse Union. 52
IUPAT	International Union of Painters and Allied Trades. 53
IWW	Industrial Workers of the World. 48–50
JATC	Joint Apprenticeship Training Committee. 19
LCCA	Labor Coalition for Community Action. 23–26
LCSP	Labor Campaign for Single Payer. 52, 53, 62
LIUNA	Laborers' International Union of North America. 6
LMRDA	Landrum-Griffin Labor-Management Reporting and Disclosure Act. 16
NABTU	North America's Building Trades Unions. 3, 8, 25–27, 47
NEPA	National Environmental Policy Act. 23
NLRA	National Labor Relations Act. 14, 16, 40, 49
NLRB	National Labor Relations Board. 1, 10, 14–16, 49, 51, 53–55, 59, 62
OCAW	Oil, Chemical and Atomic Workers Union. 10, 24, 29, 37, 38, 40–47, 53
OPCIMA	Operative Plasterers' and Cement Masons' International Association. 11, 59, 60
OSH Act	Occupational Safety and Health Act. 6
OWIU	Oil Workers International Union. 40, 46
PACE	Paper, Allied-Industrial, Chemical, and Energy Workers International Union. 37, 44–46

---

PLA	Project Labor Agreement (also called Community Workforce Agreement [CWA]). 56–58, 60, 61
PRO Act	Protecting the Right to Organize Act. iv, 58
RWDSU	Retail, Wholesale, and Department Store Union. 38
SEIU	Service Employees International Union. 23, 24, 26
UA	United Association of Journeymen and Apprentices of the Plumbing and Pipe Fitting Industry. v, 19, 29, 33, 35, 37, 47, 48, 57, 61, 62
UAW	United Auto Workers. 21
UFCW	United Food and Commercial Workers. iv
UGCCWA	United Gas, Coke, and Chemical Workers of America. 39–41, 46
UMWA	United Mine Workers of America. 12, 40, 41
UPIU	United Paperworkers' International Union. 44–46
USW	United Steel, Paper and Forestry, Rubber, Manufacturing, Energy, Allied Industrial and Service Workers International Union. 2, 10, 21, 24, 29, 37, 38, 45–47, 61, 62